

Laminin antibody [4C7]

Cat. No. GTX17107

Host	Mouse
Clonality	Monoclonal
Isotype	IgG2a
Applications	IHC-P, IHC-Fr
Reactivity	Human

References (1)

Package

500 µl

Applications

Application Note

*Optimal dilutions/concentrations should be determined by the researcher.

Suggested dilution	Recommended dilution
IHC-P	1:5-1:20
IHC-Fr	Assay dependent

Not tested in other applications.

Product Note

This antibody reacts with the terminal globular domain of the A chain. The staining with this antibody is sensitive to fixation of paraffin tissues and use of proteolytic enzymatic treatment.

Properties

Form	Liquid
Buffer	Tissue culture supernatant
Preservative	0.09% Sodium azide
Storage	Store as concentrated solution. Centrifuge briefly prior to opening vial. Store at 4°C.
Immunogen	The A chain of human laminin.
Purification	Unpurified
Conjugation	Unconjugated

Note

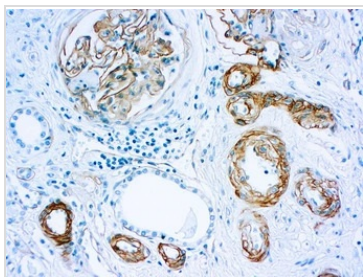
For laboratory research use only. Not for any clinical, therapeutic, or diagnostic use in humans or animals. Not for animal or human consumption.

Purchasers shall not, and agree not to enable third parties to, analyze, copy, reverse engineer or otherwise attempt to determine the structure or sequence of the product.



For full product information, images and publications, please visit our [website](#).

DATA IMAGES



GTX17107 IHC-P Image

IHC-P analysis of human skin tissue using GTX17107 Laminin antibody [4C7].



For full product information, images and publications, please visit our [website](#).