

## Cytokeratin 5 antibody [XM26]

**Cat. No. GTX17130**

<b>Host</b>	Mouse
<b>Clonality</b>	Monoclonal
<b>Isotype</b>	IgG1
<b>Applications</b>	IHC-P
<b>Reactivity</b>	Human

**Package**  
500 µl

## Applications

**Application Note**

\*Optimal dilutions/concentrations should be determined by the researcher.

Suggested dilution	Recommended dilution
IHC-P	1:50-1:75

**Note : Recommendations for antigen retrieval : Citrate Buffer pH 6.0**

Not tested in other applications.

## Properties

<b>Form</b>	Liquid
<b>Buffer</b>	Tissue culture supernatant
<b>Preservative</b>	0.09% Sodium azide
<b>Storage</b>	Store as concentrated solution. Centrifuge briefly prior to opening vial. Store at 4°C.
<b>Immunogen</b>	BALB/C mice were injected with prokaryotic recombinant protein corresponding to 103 amino acid portion of C-terminal region of the human cytokeratin 5 molecule.
<b>Purification</b>	Unpurified
<b>Conjugation</b>	Unconjugated

**Note**

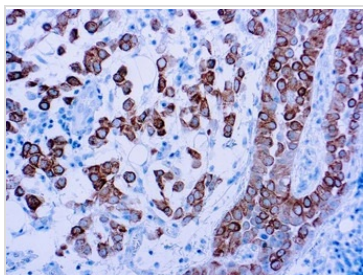
For laboratory research use only. Not for any clinical, therapeutic, or diagnostic use in humans or animals. Not for animal or human consumption.

Purchasers shall not, and agree not to enable third parties to, analyze, copy, reverse engineer or otherwise attempt to determine the structure or sequence of the product.



For full product information, images and publications, please visit our [website](#).

## DATA IMAGES

**GTX17130 IHC-P Image**

IHC-P analysis of human skin tissue using GTX17130 Cytokeratin 5 antibody [XM26].



For full product information, images and publications, please visit our [website](#).