

CD3 antibody [F7.2.38]

Cat. No. GTX17143

Host	Mouse
Clonality	Monoclonal
Isotype	IgG1
Applications	ICC/IF, IHC-P
Reactivity	Human

References (1)

Package

500 µl

Applications

Application Note

*Optimal dilutions/concentrations should be determined by the researcher.

Suggested dilution	Recommended dilution
ICC/IF	Assay dependent
IHC-P	1:10-1:25

Note : Recommendations for antigen retrieval : EDTA buffer pH 8.0

Not tested in other applications.

Product Note This antibody labels CD3ε and is a useful tool for the identification of T cells and related neoplasms.

Properties

Form	Liquid
Buffer	Tissue culture supernatant
Preservative	0.09% Sodium azide
Storage	Store as concentrated solution. Centrifuge briefly prior to opening vial. Store at 4°C.
Immunogen	Purified CD3εγδ/CD3ω
Purification	Unpurified
Conjugation	Unconjugated

Note

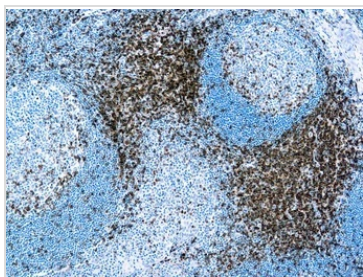
For laboratory research use only. Not for any clinical, therapeutic, or diagnostic use in humans or animals. Not for animal or human consumption.

Purchasers shall not, and agree not to enable third parties to, analyze, copy, reverse engineer or otherwise attempt to determine the structure or sequence of the product.



For full product information, images and publications, please visit our [website](#).

DATA IMAGES



GTX17143 IHC-P Image

IHC-P analysis of human tonsil tissue using GTX17143 CD3 antibody [F7.2.38].



For full product information, images and publications, please visit our [website](#).