

EMX2 antibody

Cat. No. GTX17164

Host	Rabbit
Clonality	Polyclonal
Isotype	IgG
Applications	WB, IHC-P, ELISA
Reactivity	Human

Package
100 µg

Applications

Application Note

*Optimal dilutions/concentrations should be determined by the researcher.

Suggested dilution	Recommended dilution
WB	1 - 2 µg/mL
IHC-P	2.5 µg/mL
ELISA	Assay dependent

Not tested in other applications.

Calculated MW 28 kDa. ([Note](#))

Product Note At least two isoforms of EMX2 are known to exist; this antibody will detect both isoforms. EMX2 antibody is predicted to not cross-react with EMX1

Properties

Form	Liquid
Buffer	PBS
Preservative	0.02% Sodium azide
Storage	Store as concentrated solution. Centrifuge briefly prior to opening vial. For short-term storage (1-2 weeks), store at 4°C. For long-term storage, aliquot and store at -20°C or below. Avoid multiple freeze-thaw cycles.
Concentration	1 mg/ml (Please refer to the vial label for the specific concentration.)
Immunogen	EMX2 antibody was raised against an 18 amino acid synthetic peptide near the center of human EMX2. The immunogen is located within amino acids 60 - 110 of EMX2.
Purification	Purified by antigen-affinity chromatography
Conjugation	Unconjugated



For full product information, images and publications, please visit our [website](#).

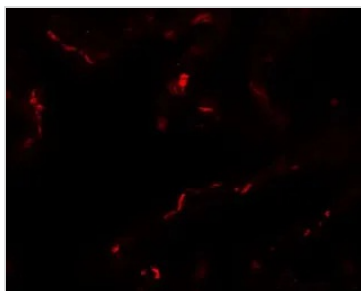
Date 2026 / 01 / 10 Page 1 of 2

For laboratory research use only. Not for any clinical, therapeutic, or diagnostic use in humans or animals. Not for animal or human consumption.

Note

Purchasers shall not, and agree not to enable third parties to, analyze, copy, reverse engineer or otherwise attempt to determine the structure or sequence of the product.

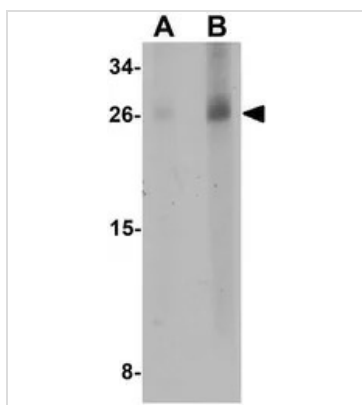
DATA IMAGES



GTX17164 IHC-P Image

IHC-P analysis of human lung tissue using GTX17164 EMX2 antibody.

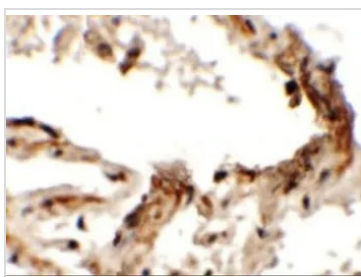
Working concentration : 20 µg/ml



GTX17164 WB Image

WB analysis of human lung tissue lysate using GTX17164 EMX2 antibody.

Working concentration : (A) 1 and (B) 2 µg/ml



GTX17164 IHC-P Image

IHC-P analysis of human lung tissue using GTX17164 EMX2 antibody.

Working concentration : 2.5 µg/ml



For full product information, images and publications, please visit our [website](https://www.genetex.com).