

## EMX2 antibody

**Cat. No. GTX17164**

<b>Host</b>	Rabbit
<b>Clonality</b>	Polyclonal
<b>Isotype</b>	IgG
<b>Applications</b>	WB, IHC-P, ELISA
<b>Reactivity</b>	Human

**Package**  
100 µg

## Applications

**Application Note**

\*Optimal dilutions/concentrations should be determined by the researcher.

Suggested dilution	Recommended dilution
WB	1 - 2 µg/mL
IHC-P	2.5 µg/mL
ELISA	Assay dependent

Not tested in other applications.

**Calculated MW** 28 kDa. ([Note](#))

**Product Note**

At least two isoforms of EMX2 are known to exist; this antibody will detect both isoforms. EMX2 antibody is predicted to not cross-react with EMX1

## Properties

<b>Form</b>	Liquid
<b>Buffer</b>	PBS
<b>Preservative</b>	0.02% Sodium azide
<b>Storage</b>	Store as concentrated solution. Centrifuge briefly prior to opening vial. For short-term storage (1-2 weeks), store at 4°C. For long-term storage, aliquot and store at -20°C or below. Avoid multiple freeze-thaw cycles.
<b>Concentration</b>	1 mg/ml (Please refer to the vial label for the specific concentration.)
<b>Immunogen</b>	EMX2 antibody was raised against an 18 amino acid synthetic peptide near the center of human EMX2. The immunogen is located within amino acids 60 - 110 of EMX2.
<b>Purification</b>	Purified by antigen-affinity chromatography
<b>Conjugation</b>	Unconjugated



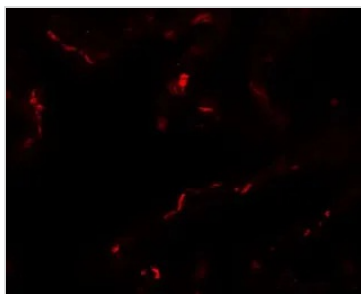
For full product information, images and publications, please visit our [website](#).

For laboratory research use only. Not for any clinical, therapeutic, or diagnostic use in humans or animals. Not for animal or human consumption.

**Note**

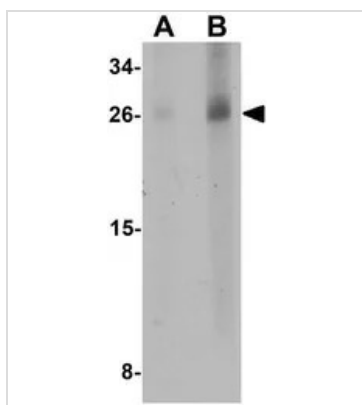
Purchasers shall not, and agree not to enable third parties to, analyze, copy, reverse engineer or otherwise attempt to determine the structure or sequence of the product.

## DATA IMAGES

**GTX17164 IHC-P Image**

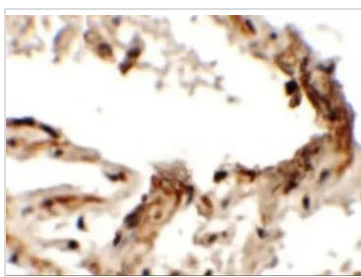
IHC-P analysis of human lung tissue using GTX17164 EMX2 antibody.

Working concentration : 20 µg/ml

**GTX17164 WB Image**

WB analysis of human lung tissue lysate using GTX17164 EMX2 antibody.

Working concentration : (A) 1 and (B) 2 µg/ml

**GTX17164 IHC-P Image**

IHC-P analysis of human lung tissue using GTX17164 EMX2 antibody.

Working concentration : 2.5 µg/ml



For full product information, images and publications, please visit our [website](#).