

## WDR5 antibody

Cat. No. GTX17169

Host	Rabbit
Clonality	Polyclonal
Isotype	IgG
Applications	WB, ICC/IF, ELISA
Reactivity	Human

Package  
100 µg

## Applications

## Application Note

\*Optimal dilutions/concentrations should be determined by the researcher.

Suggested dilution	Recommended dilution
WB	1 µg/mL
ICC/IF	5 µg/mL
ELISA	Assay dependent

Not tested in other applications.

**Calculated MW** 37 kDa. ( [Note](#) )**Product Note** WDR5 antibody is human specific. WDR5 antibody is predicted to not cross-react with other WDR family members.

## Properties

Form	Liquid
Buffer	PBS
Preservative	0.02% Sodium azide
Storage	Store as concentrated solution. Centrifuge briefly prior to opening vial. For short-term storage (1-2 weeks), store at 4°C. For long-term storage, aliquot and store at -20°C or below. Avoid multiple freeze-thaw cycles.
Concentration	1 mg/ml (Please refer to the vial label for the specific concentration.)
Immunogen	WDR5 antibody was raised against a 19 amino acid synthetic peptide near the amino terminus of human WDR5. The immunogen is located within the first 50 amino acids of WDR5.
Purification	Purified by antigen-affinity chromatography
Conjugation	Unconjugated



For full product information, images and publications, please visit our [website](#).

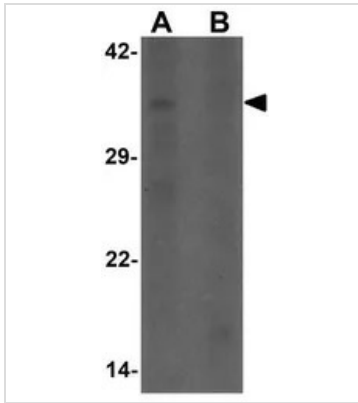
Date 2025 / 12 / 14 Page 1 of 2

For laboratory research use only. Not for any clinical, therapeutic, or diagnostic use in humans or animals. Not for animal or human consumption.

**Note**

Purchasers shall not, and agree not to enable third parties to, analyze, copy, reverse engineer or otherwise attempt to determine the structure or sequence of the product.

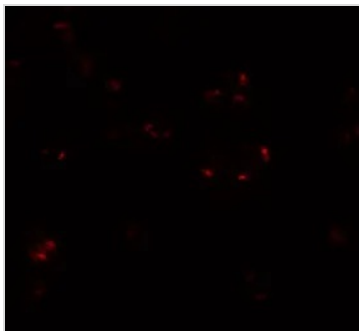
## DATA IMAGES



### GTX17169 WB Image

WB analysis of 293 cell lysate in (A) the absence and (B) the presence of blocking peptide using GTX17169 WDR5 antibody.

Working concentration : 1 µg/ml



### GTX17169 ICC/IF Image

ICC/IF analysis of 293 cells using GTX17169 WDR5 antibody.

Working concentration : 20 µg/ml



### GTX17169 ICC/IF Image

ICC/IF analysis of 293 cells using GTX17169 WDR5 antibody.

Working concentration : 5 µg/ml



For full product information, images and publications, please visit our [website](https://www.genetex.com).