

PTPRD antibody

Cat. No. GTX17171

Host	Rabbit
Clonality	Polyclonal
Isotype	IgG
Application	WB, ELISA
Reactivity	Human

Package
100 µg

APPLICATION

Application Note

*Optimal dilutions/concentrations should be determined by the researcher.

Suggested dilution	Recommended dilution
WB	1 - 2 µg/mL
ELISA	Assay dependent

Not tested in other applications.

Calculated MW 215 kDa. ([Note](#))

Product Note PTPRD antibody is human specific. At least three alternatively spliced transcript variants encoding distinct isoforms have been observed. PTPRD cleavage products are often observed in vivo

PROPERTIES

Form	Liquid
Buffer	PBS
Preservative	0.02% Sodium azide
Storage	Store as concentrated solution. Centrifuge briefly prior to opening vial. For short-term storage (1-2 weeks), store at 4°C. For long-term storage, aliquot and store at -20°C or below. Avoid multiple freeze-thaw cycles.
Concentration	1 mg/ml (Please refer to the vial label for the specific concentration.)
Immunogen	PTPRD antibody was raised against an 18 amino acid synthetic peptide near the amino terminus of human PTPRD. The immunogen is located within the first 50 amino acids of PTPRD.
Purification	Purified by antigen-affinity chromatography
Conjugation	Unconjugated



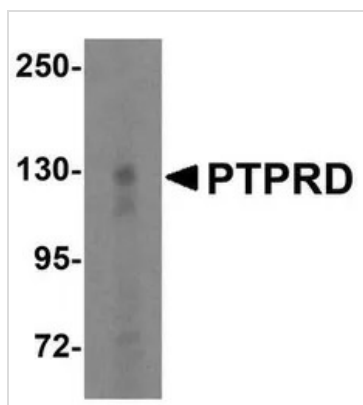
For full product information, images and publications, please visit our [website](#).

For laboratory research use only. Not for any clinical, therapeutic, or diagnostic use in humans or animals. Not for animal or human consumption.

Note

Purchasers shall not, and agree not to enable third parties to, analyze, copy, reverse engineer or otherwise attempt to determine the structure or sequence of the product.

DATA IMAGES



GTX17171 WB Image

Western blot analysis of PTPRD in HeLa cell lysate with PTPRD antibody at 1 µg/mL.



For full product information, images and publications, please visit our [website](#).