

ACSL1 antibody

Cat. No. GTX17180

Host	Rabbit
Clonality	Polyclonal
Isotype	IgG
Applications	WB, IHC-P, ELISA
Reactivity	Human, Mouse, Rat

Package
100 µg

Applications

Application Note

*Optimal dilutions/concentrations should be determined by the researcher.

Suggested dilution	Recommended dilution
WB	0.25 µg/mL
IHC-P	20 µg/mL
ELISA	Assay dependent

Not tested in other applications.

Calculated MW 78 kDa. ([Note](#))

Product Note At least three isoforms of ACSL1 are known to exist; this antibody will detect all three isoforms.

Properties

Form	Liquid
Buffer	PBS
Preservative	0.02% Sodium azide
Storage	Store as concentrated solution. Centrifuge briefly prior to opening vial. For short-term storage (1-2 weeks), store at 4°C. For long-term storage, aliquot and store at -20°C or below. Avoid multiple freeze-thaw cycles.
Concentration	1 mg/ml (Please refer to the vial label for the specific concentration.)
Immunogen	Rabbit polyclonal ACSL1 antibody was raised against an 18 amino acid peptide near the center of human ACSL1. The immunogen is located within amino acids 240 - 290 of ACSL1.
Purification	Purified by antigen-affinity chromatography
Conjugation	Unconjugated



For full product information, images and publications, please visit our [website](#).

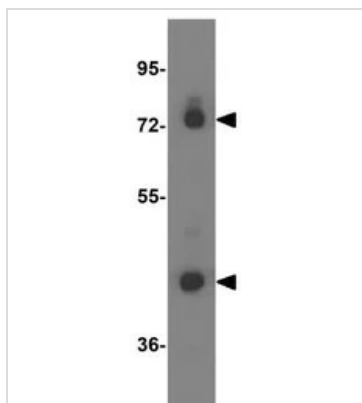
Date 2026 / 01 / 08 Page 1 of 2

For laboratory research use only. Not for any clinical, therapeutic, or diagnostic use in humans or animals. Not for animal or human consumption.

Note

Purchasers shall not, and agree not to enable third parties to, analyze, copy, reverse engineer or otherwise attempt to determine the structure or sequence of the product.

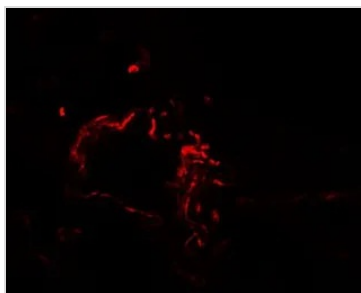
DATA IMAGES



GTX17180 WB Image

WB analysis of human liver tissue lysate using GTX17180 ACSL1 antibody.

Working concentration : 0.25 µg/ml



GTX17180 IHC-P Image

IHC-P analysis of human lung tissue using GTX17180 ACSL1 antibody.

Working concentration : 20 µg/ml



For full product information, images and publications, please visit our [website](#).