

FOXH1 antibody

Cat. No. GTX17182

Host	Rabbit
Clonality	Polyclonal
Isotype	IgG
Applications	WB, IHC-P, ELISA
Reactivity	Human, Mouse, Rat

References (2)

Package

100 µg

Applications

Application Note

*Optimal dilutions/concentrations should be determined by the researcher.

Suggested dilution	Recommended dilution
WB	1 - 2 µg/mL
IHC-P	20 µg/mL
ELISA	Assay dependent

Not tested in other applications.

Calculated MW 39 kDa. ([Note](#))

Product Note FOXH1 antibody is predicted to not cross-react with any other members of the forkhead box family.

Properties

Form	Liquid
Buffer	PBS
Preservative	0.02% Sodium azide
Storage	Store as concentrated solution. Centrifuge briefly prior to opening vial. For short-term storage (1-2 weeks), store at 4°C. For long-term storage, aliquot and store at -20°C or below. Avoid multiple freeze-thaw cycles.
Concentration	1 mg/ml (Please refer to the vial label for the specific concentration.)
Immunogen	Rabbit polyclonal FOXH1 antibody was raised against a 19 amino acid peptide near the amino terminus of human FOXH1. The immunogen is located within the first 50 amino acids of FOXH1.
Purification	Purified by antigen-affinity chromatography
Conjugation	Unconjugated



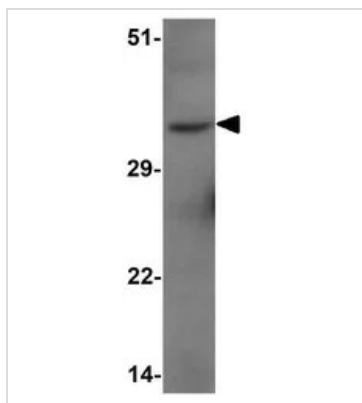
For full product information, images and publications, please visit our [website](#).

For laboratory research use only. Not for any clinical, therapeutic, or diagnostic use in humans or animals. Not for animal or human consumption.

Note

Purchasers shall not, and agree not to enable third parties to, analyze, copy, reverse engineer or otherwise attempt to determine the structure or sequence of the product.

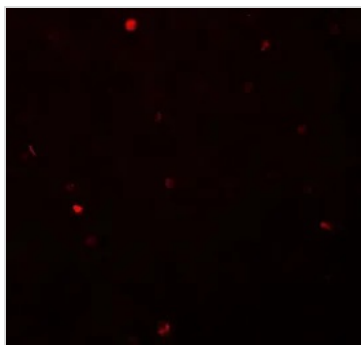
DATA IMAGES



GTx17182 WB Image

WB analysis of human liver tissue lysate using GTx17182 FOXH1 antibody.

Working concentration : 1 µg/ml



GTx17182 IHC-P Image

IHC-P analysis of human liver tissue using GTx17182 FOXH1 antibody.

Working concentration : 20 µg/ml



For full product information, images and publications, please visit our [website](#).