

CD1a antibody [O10]

Cat. No. GTX17186

Host	Mouse
Clonality	Monoclonal
Isotype	IgG1
Applications	IHC-P, IHC
Reactivity	Human

References (1)

Package

500 µl

Applications

Application Note

*Optimal dilutions/concentrations should be determined by the researcher.

Suggested dilution	Recommended dilution
IHC-P	1:25-1:50
IHC	Assay dependent

Note : Recommendations for antigen retrieval : EDTA buffer pH 8.0

Not tested in other applications.

Properties

Form	Liquid
Buffer	Tissue culture supernatant
Preservative	0.09% Sodium azide
Storage	Store as concentrated solution. Centrifuge briefly prior to opening vial. Store at 4°C.
Immunogen	BALB/C mice were injected with thymus cells.
Purification	Unpurified
Conjugation	Unconjugated

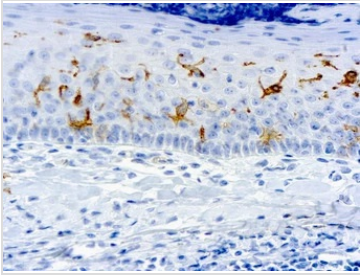
Note

For laboratory research use only. Not for any clinical, therapeutic, or diagnostic use in humans or animals. Not for animal or human consumption.

Purchasers shall not, and agree not to enable third parties to, analyze, copy, reverse engineer or otherwise attempt to determine the structure or sequence of the product.

For full product information, images and publications, please visit our [website](#).

DATA IMAGES

**GTX17186 IHC-P Image**

IHC-P analysis of human tonsil tissue using GTX17186 CD1a antibody [O10].



For full product information, images and publications, please visit our [website](#).