

## USP25 antibody

Cat. No. GTX17216

<b>Host</b>	Rabbit
<b>Clonality</b>	Polyclonal
<b>Isotype</b>	IgG
<b>Applications</b>	WB, IHC-P, ELISA
<b>Reactivity</b>	Human, Mouse

Package  
100 µg

## Applications

## Application Note

\*Optimal dilutions/concentrations should be determined by the researcher.

Suggested dilution	Recommended dilution
WB	1 - 2 µg/mL
IHC-P	5 µg/mL
ELISA	Assay dependent

Not tested in other applications.

**Calculated MW** 122 kDa. ([Note](#))

## Properties

<b>Form</b>	Liquid
<b>Buffer</b>	PBS
<b>Preservative</b>	0.02% Sodium azide
<b>Storage</b>	Store as concentrated solution. Centrifuge briefly prior to opening vial. For short-term storage (1-2 weeks), store at 4°C. For long-term storage, aliquot and store at -20°C or below. Avoid multiple freeze-thaw cycles.
<b>Concentration</b>	1 mg/ml (Please refer to the vial label for the specific concentration.)
<b>Immunogen</b>	USP25 antibody was raised against a 17 amino acid peptide near the center of human USP25. The immunogen is located within amino acids 470 - 520 of USP25.
<b>Purification</b>	Purified by antigen-affinity chromatography
<b>Conjugation</b>	Unconjugated

## Note

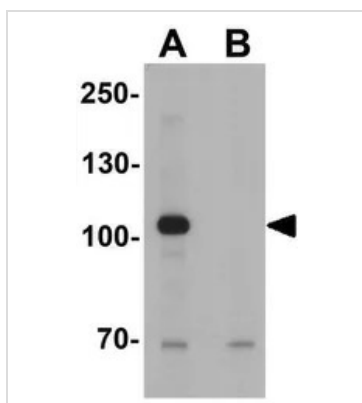
For laboratory research use only. Not for any clinical, therapeutic, or diagnostic use in humans or animals. Not for animal or human consumption.

Purchasers shall not, and agree not to enable third parties to, analyze, copy, reverse engineer or otherwise attempt to determine the structure or sequence of the product.



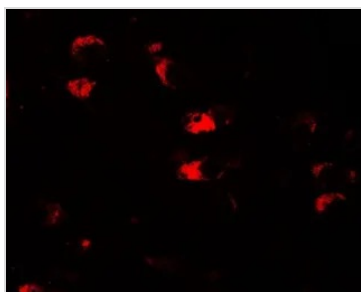
For full product information, images and publications, please visit our [website](#).

## DATA IMAGES

**GTX17216 WB Image**

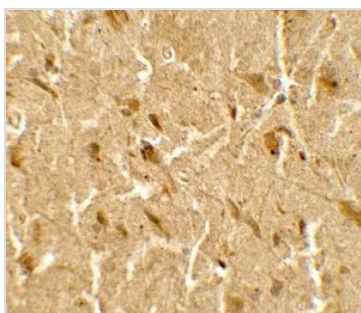
WB analysis of mouse brain tissue lysate in (A) the absence and (B) the presence of blocking peptide using GTX17216 USP25 antibody.

Working concentration : 1  $\mu\text{g/ml}$

**GTX17216 IHC-P Image**

IHC-P analysis of human brain tissue using GTX17216 USP25 antibody.

Working concentration : 20  $\mu\text{g/ml}$

**GTX17216 IHC-P Image**

IHC-P analysis of human brain tissue using GTX17216 USP25 antibody.

Working concentration : 5  $\mu\text{g/ml}$



For full product information, images and publications, please visit our [website](#).