

POU2F3 antibody

Cat. No. GTX17217

Host	Rabbit
Clonality	Polyclonal
Isotype	IgG
Applications	WB, IHC-P, ELISA
Reactivity	Human, Mouse, Rat

References (1)

Package

100 µg

Applications

Application Note

*Optimal dilutions/concentrations should be determined by the researcher.

Suggested dilution	Recommended dilution
WB	1 - 2 µg/mL
IHC-P	5 µg/mL
ELISA	Assay dependent

Not tested in other applications.

Calculated MW 47 kDa. ([Note](#))

Product Note At least two isoforms are known to exist. This antibody will recognize both isoforms. POU2F3 antibody is predicted to not cross-react with other members of the POU domain class 2 family.

Properties

Form	Liquid
Buffer	PBS
Preservative	0.02% Sodium azide
Storage	Store as concentrated solution. Centrifuge briefly prior to opening vial. For short-term storage (1-2 weeks), store at 4°C. For long-term storage, aliquot and store at -20°C or below. Avoid multiple freeze-thaw cycles.
Concentration	1 mg/ml (Please refer to the vial label for the specific concentration.)
Immunogen	POU2F3 antibody was raised against a 17 amino acid peptide near the carboxy terminus of human POU2F3. The immunogen is located within amino acids 370 - 420 of POU2F3.
Purification	Purified by antigen-affinity chromatography
Conjugation	Unconjugated



For full product information, images and publications, please visit our [website](#).

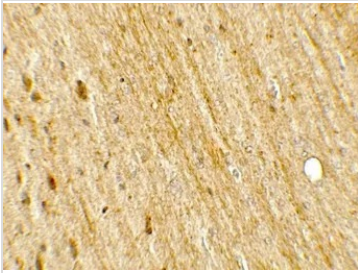
Date 2026 / 01 / 07 Page 1 of 2

For laboratory research use only. Not for any clinical, therapeutic, or diagnostic use in humans or animals. Not for animal or human consumption.

Note

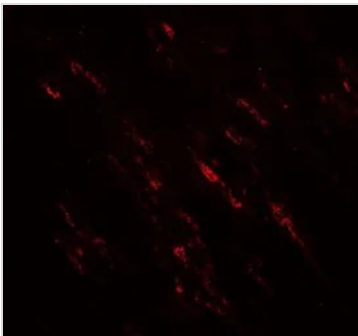
Purchasers shall not, and agree not to enable third parties to, analyze, copy, reverse engineer or otherwise attempt to determine the structure or sequence of the product.

DATA IMAGES



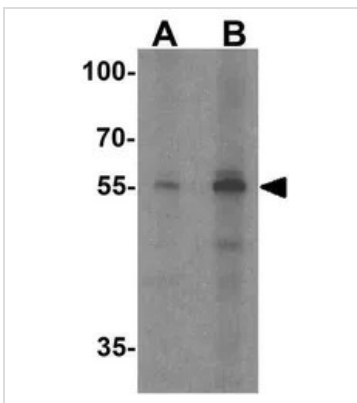
GTX17217 IHC-P Image

IHC-P analysis of rat brain tissue using GTX17217 POU2F3 antibody.
Working concentration : 5 µg/ml



GTX17217 IHC-P Image

IHC-P analysis of rat brain tissue using GTX17217 POU2F3 antibody.
Working concentration : 20 µg/ml



GTX17217 WB Image

WB analysis of SK-N-SH cell lysate using GTX17217 POU2F3 antibody.
Working concentration : (A) 1 and (B) 2 µg/ml



For full product information, images and publications, please visit our [website](#).