

## CD66e antibody[Col-1](ready-to-use)

Cat. No. GTX17238

Host	Mouse
Clonality	Monoclonal
Isotype	IgG2a
Applications	IHC-P
Reactivity	Human

References ( 2 )  
Package  
6 ml

## Applications

## Application Note

\*Optimal dilutions/concentrations should be determined by the researcher.

Suggested dilution	Recommended dilution
IHC-P	Assay dependent

Not tested in other applications.

## Product Note

This antibody stains specific regions of CEA. It reacts with colorectal adenocarcinomas but does not show any staining with polymorphonuclear neutrophils and erythrocytes.

## Properties

Form	Liquid
Buffer	Ascites
Preservative	0.09% Sodium azide
Storage	Store as concentrated solution. Centrifuge briefly prior to opening vial. Store at 4°C.
Immunogen	BALB/C mice were injected with extract of colon carcinoma cells.
Purification	Unpurified
Conjugation	Unconjugated

## Note

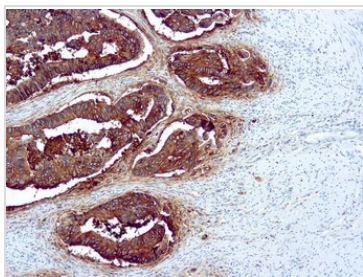
For laboratory research use only. Not for any clinical, therapeutic, or diagnostic use in humans or animals. Not for animal or human consumption.

Purchasers shall not, and agree not to enable third parties to, analyze, copy, reverse engineer or otherwise attempt to determine the structure or sequence of the product.



For full product information, images and publications, please visit our [website](#).

## DATA IMAGES



### GTX17238 IHC-P Image

IHC-P analysis of human colon carcinoma tissue using GTX17238 CEA antibody [Col-1] (ready-to-use).



For full product information, images and publications, please visit our [website](#).