

Alpha fetoprotein / AFP antibody [C3]

Cat. No. GTX17240

Host	Mouse
Clonality	Monoclonal
Isotype	IgG2a
Applications	IHC-P
Reactivity	Human

Package
500 µl

Applications

Application Note

*Optimal dilutions/concentrations should be determined by the researcher.

Suggested dilution	Recommended dilution
IHC-P	1:25-1:50

Not tested in other applications.

Properties

Form	Liquid
Buffer	Ascites
Preservative	0.09% Sodium azide
Storage	Store as concentrated solution. Centrifuge briefly prior to opening vial. Store at 4°C.
Immunogen	BALB/C mice were injected with purified human α -fetoprotein.
Purification	Unpurified
Conjugation	Unconjugated

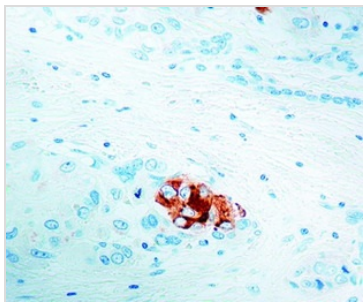
Note

For laboratory research use only. Not for any clinical, therapeutic, or diagnostic use in humans or animals. Not for animal or human consumption.

Purchasers shall not, and agree not to enable third parties to, analyze, copy, reverse engineer or otherwise attempt to determine the structure or sequence of the product.



For full product information, images and publications, please visit our [website](#).

DATA IMAGES

GTX17240 IHC-P Image

IHC-P analysis of human fetal liver tissue using GTX17240 Alpha fetoprotein / AFP antibody [C3].



For full product information, images and publications, please visit our [website](#).