

Relaxin 3 antibody

Cat. No. GTX17243

Host	Rabbit
Clonality	Polyclonal
Isotype	IgG
Applications	WB, IHC-P, ELISA
Reactivity	Human

Package
100 µg

Applications

Application Note

*Optimal dilutions/concentrations should be determined by the researcher.

Suggested dilution	Recommended dilution
WB	1 - 2 µg/mL
IHC-P	5 µg/mL
ELISA	Assay dependent

Not tested in other applications.

Calculated MW 15 kDa. ([Note](#))

Product Note RLN3 antibody is human specific. RLN3 antibody is predicted to not cross-react with other members of the Relaxin protein family.

Properties

Form	Liquid
Buffer	PBS
Preservative	0.02% Sodium azide
Storage	Store as concentrated solution. Centrifuge briefly prior to opening vial. For short-term storage (1-2 weeks), store at 4°C. For long-term storage, aliquot and store at -20°C or below. Avoid multiple freeze-thaw cycles.
Concentration	1 mg/ml (Please refer to the vial label for the specific concentration.)
Immunogen	RLN3 antibody was raised against a 19 amino acid peptide near the center of human RLN3. The immunogen is located within amino acids 80 - 130 of RLN3.
Purification	Purified by antigen-affinity chromatography
Conjugation	Unconjugated



For full product information, images and publications, please visit our [website](#).

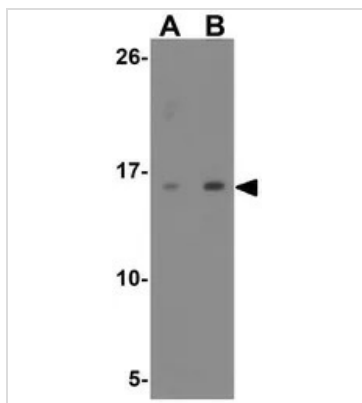
Date 2026 / 01 / 11 Page 1 of 2

For laboratory research use only. Not for any clinical, therapeutic, or diagnostic use in humans or animals. Not for animal or human consumption.

Note

Purchasers shall not, and agree not to enable third parties to, analyze, copy, reverse engineer or otherwise attempt to determine the structure or sequence of the product.

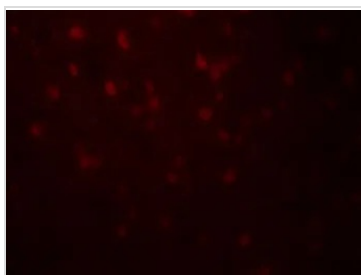
DATA IMAGES



GTX17243 WB Image

WB analysis of HeLa cell lysate using GTX17243 Relaxin 3 antibody.

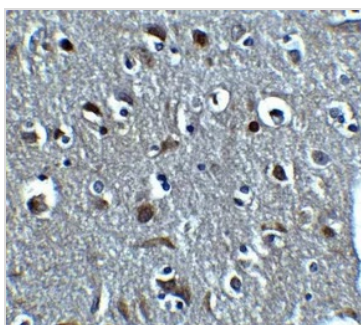
Working concentration : (A) 1 and (B) 2 µg/ml



GTX17243 IHC-P Image

IHC-P analysis of human brain tissue using GTX17243 Relaxin 3 antibody.

Working concentration : 20 µg/ml



GTX17243 IHC-P Image

IHC-P analysis of human brain tissue using GTX17243 Relaxin 3 antibody.

Working concentration : 5 µg/ml



For full product information, images and publications, please visit our [website](#).