

# Colorectal adenocarcinoma antibody [C241:5:1:4]

**Cat. No. GTX17252**

<b>Host</b>	Mouse
<b>Clonality</b>	Monoclonal
<b>Isotype</b>	IgG1
<b>Applications</b>	IHC-P
<b>Reactivity</b>	Human

**Package**  
500 µl

## Applications

### Application Note

\*Optimal dilutions/concentrations should be determined by the researcher.

Suggested dilution	Recommended dilution
IHC-P	1:25-1:50

**Note : Recommendations for antigen retrieval : Citrate Buffer pH 6.0**

Not tested in other applications.

### Product Note

This antibody reacts specifically with sialyl Lewisa and recognizes an epitope being designated CA 19-9. It does not cross-reacts with Lewisa and Lewisb.

## Properties

<b>Form</b>	Liquid
<b>Buffer</b>	Tissue culture supernatant
<b>Preservative</b>	0.09% Sodium azide
<b>Storage</b>	Store as concentrated solution. Centrifuge briefly prior to opening vial. Store at 4°C.
<b>Immunogen</b>	Human colorectal adenocarcinoma cell line COLO 205.
<b>Purification</b>	Unpurified
<b>Conjugation</b>	Unconjugated

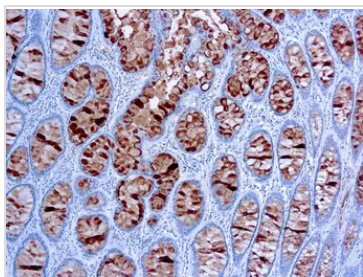
### Note

For laboratory research use only. Not for any clinical, therapeutic, or diagnostic use in humans or animals. Not for animal or human consumption.

Purchasers shall not, and agree not to enable third parties to, analyze, copy, reverse engineer or otherwise attempt to determine the structure or sequence of the product.



For full product information, images and publications, please visit our [website](#).

**DATA IMAGES**

**GTX17252 IHC-P Image**

IHC-P analysis of human colon carcinoma tissue using GTX17252 Colorectal adenocarcinoma antibody [C241:5:1:4].



For full product information, images and publications, please visit our [website](#).