

alpha Catenin antibody [1G5]

Cat. No. GTX17259

Host	Mouse
Clonality	Monoclonal
Isotype	IgG1
Applications	WB, ICC/IF, IP
Reactivity	Human, Mouse

Package
100 µg

Applications

Application Note

*Optimal dilutions/concentrations should be determined by the researcher.

Suggested dilution	Recommended dilution
WB	1:100-1:1000
ICC/IF	10 µg/ml
IP	Assay dependent

Not tested in other applications.

Calculated MW 100 kDa. ([Note](#))

Properties

Form	Liquid
Buffer	PBS, 0.1% BSA
Preservative	0.05% Sodium azide
Storage	Store as concentrated solution. Centrifuge briefly prior to opening vial. For short-term storage (1-2 weeks), store at 4°C. For long-term storage, aliquot and store at -20°C or below. Avoid multiple freeze-thaw cycles.
Concentration	1 mg/ml (Please refer to the vial label for the specific concentration.)
Immunogen	90 kDa MBP/alpha catenin fusion protein purified on amylose column.
Purification	Protein G purified
Conjugation	Unconjugated

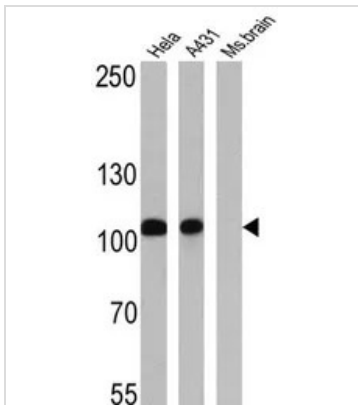
Note

For laboratory research use only. Not for any clinical, therapeutic, or diagnostic use in humans or animals. Not for animal or human consumption.

Purchasers shall not, and agree not to enable third parties to, analyze, copy, reverse engineer or otherwise attempt to determine the structure or sequence of the product.

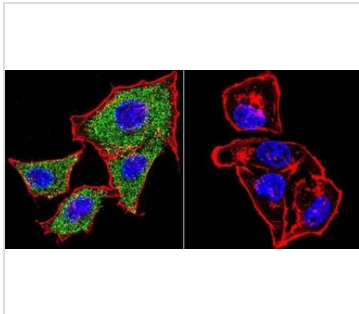


For full product information, images and publications, please visit our [website](#).

DATA IMAGES

GTX17259 WB Image

WB analysis of 25 ug of HeLa (lane 1), A431 (lane 2) and mouse brain (lane 3) using GTX17259 alpha Catenin antibody [1G5].

Dilution : 1:500


GTX17259 ICC/IF Image

ICC/IF analysis of HeLa cells using GTX17259 alpha Catenin antibody [1G5]. Cells were probed without (right) or with (left) an antibody.

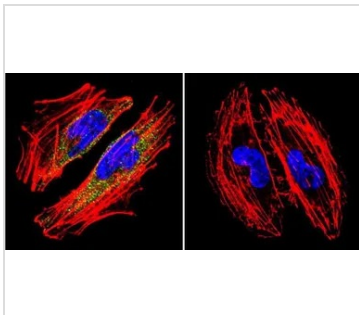
Green : Primary antibody

Blue : Nuclei

Red : Actin

Fixation : formaldehyde

Dilution : 1:20 overnight at 4°C


GTX17259 ICC/IF Image

ICC/IF analysis of A2058 Cells using GTX17259 alpha Catenin antibody [1G5]. Cells were probed without (right) or with (left) an antibody.

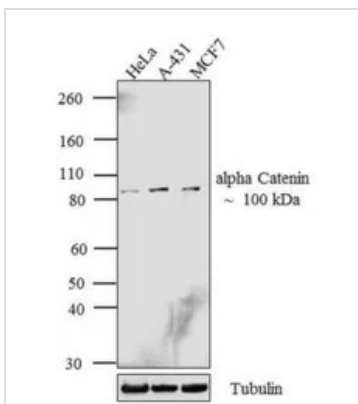
Green : Primary antibody

Blue : Nuclei

Red : Actin

Fixation : formaldehyde

Dilution : 1:20 overnight at 4°C


GTX17259 WB Image

WB analysis of whole cell extracts (30 µg lysate) of HeLa (Lane 1), A-431 (Lane 2) and MCF7 (Lane 3) using GTX17259 alpha Catenin antibody [1G5].

Dilution : 1:250-1:750



For full product information, images and publications, please visit our [website](https://www.genetex.com).