

NLRP3 antibody [nalpy3-b]

Cat. No. GTX17267

| | |
|--------------|----------------|
| Host | Mouse |
| Clonality | Monoclonal |
| Isotype | IgG1 |
| Applications | WB, IHC-Fr, IP |
| Reactivity | Human |

Package
50 µg

Applications

Application Note

*Optimal dilutions/concentrations should be determined by the researcher.

| Suggested dilution | Recommended dilution |
|--------------------|----------------------|
| WB | 1:1,000 |
| IHC-Fr | Assay dependent |
| IP | 1:50 |

Not tested in other applications.

Calculated MW 118 kDa. ([Note](#))

Properties

| | |
|---------------|--|
| Form | Liquid |
| Buffer | PBS |
| Preservative | 0.02% Sodium azide |
| Storage | Store as concentrated solution. Centrifuge briefly prior to opening vial. Store at 4°C. |
| Concentration | Batch dependent (Please refer to the vial label for the specific concentration.) |
| Immunogen | Cryopyrin (monoclonal Nalpy3-b) antibody was raised against recombinant human NALP3/NLRP3. |
| Purification | Purified IgG1 From tissue culture supernatant |
| Conjugation | Unconjugated |

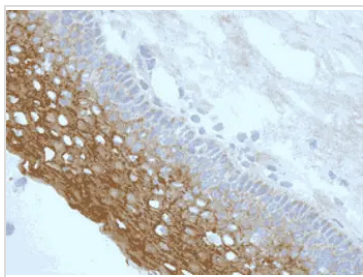
Note

For laboratory research use only. Not for any clinical, therapeutic, or diagnostic use in humans or animals. Not for animal or human consumption.

Purchasers shall not, and agree not to enable third parties to, analyze, copy, reverse engineer or otherwise attempt to determine the structure or sequence of the product.

For full product information, images and publications, please visit our [website](#).

DATA IMAGES



GTx17267 IHC-Fr Image

Staining of endogenous NLRP3/NALP3 in epithelial layer of human tonsil (frozen section) using NLRP3/NALP3 (human), mAb (Nalpy3-b)



For full product information, images and publications, please visit our [website](#).