

M13 antibody [E1] (Biotin)

Cat. No. GTX17269

| | |
|---------------------|---------------------|
| Host | Mouse |
| Clonality | Monoclonal |
| Isotype | IgG2a |
| Applications | WB, FCM, ELISA, IHC |
| Reactivity | Bacteriophage M13 |

Package
50 µg

Applications

Application Note

*Optimal dilutions/concentrations should be determined by the researcher.

| Suggested dilution | Recommended dilution |
|--------------------|--------------------------------|
| WB | 1-5 µg/ml |
| FCM | 1 µg for 10 ⁶ cells |
| ELISA | Assay dependent |
| IHC | Assay dependent |

Not tested in other applications.

Product Note M13 antibody [E1] (GTX17269) is specific for gp3 protein.

Properties

| | |
|----------------------|--|
| Form | Liquid |
| Buffer | PBS |
| Preservative | 0.08% Sodium azide |
| Storage | Store as concentrated solution. Centrifuge briefly prior to opening vial. For short-term storage (1-2 weeks), store at 4°C. For long-term storage, aliquot and store at -20°C or below. Avoid multiple freeze-thaw cycles. |
| Concentration | 1 mg/ml (Please refer to the vial label for the specific concentration.) |
| Immunogen | Full length M13 phage coat protein; Exact epitope not determined. |
| Purification | Protein A purified M13 antibody [E1] (GTX17269) is purified using 0.2µm sterile filter. |
| Conjugation | Biotin |



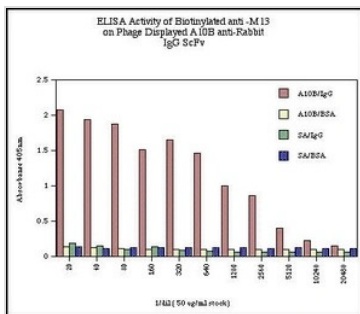
For full product information, images and publications, please visit our [website](#).

For laboratory research use only. Not for any clinical, therapeutic, or diagnostic use in humans or animals. Not for animal or human consumption.

Note

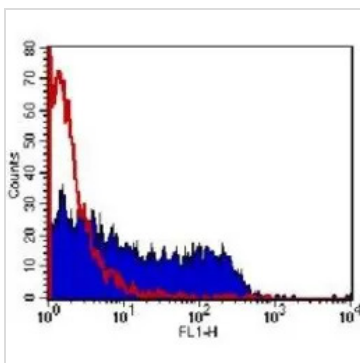
Purchasers shall not, and agree not to enable third parties to, analyze, copy, reverse engineer or otherwise attempt to determine the structure or sequence of the product.

DATA IMAGES



GTX17269 ELISA Image

Data represents absorbancy readings for A10B phage on rabbit IgG (A10B/IgG), A10B phage on BSA (A10B/BSA), streptavidin on rabbit IgG (SA/IgG) and streptavidin on BSA (SA/BSA) for each dilution of biotinylated anti-M13 monoclonal antibody.



GTX17269 FCM Image

Colo320 cell line stained with a cell-line specific M13 phage antibody (filled profile), compared to an irrelevant phage antibody (open profile). Cells were incubated overnight with 1012 phage particles, then detected with 10ug/ml anti-M13 antibody followed by rabbit anti-mouse IgG:FITC



For full product information, images and publications, please visit our [website](#).