

GAPDH antibody [12D3H9]

Cat. No. GTX17307

Host	Mouse
Clonality	Monoclonal
Isotype	IgG
Applications	WB, ELISA
Reactivity	Human, Mouse, Rat, Rabbit

Package
100 µg

Applications

Application Note

*Optimal dilutions/concentrations should be determined by the researcher.

Suggested dilution	Recommended dilution
WB	1 - 2 µg/mL
ELISA	Assay dependent

Not tested in other applications.

Calculated MW 36 kDa. ([Note](#))

Properties

Form	Liquid
Buffer	PBS
Preservative	0.02% Sodium azide
Storage	Store as concentrated solution. Centrifuge briefly prior to opening vial. For short-term storage (1-2 weeks), store at 4°C. For long-term storage, aliquot and store at -20°C or below. Avoid multiple freeze-thaw cycles.
Concentration	1 mg/ml (Please refer to the vial label for the specific concentration.)
Immunogen	GAPDH antibody was raised against a 16 amino acid peptide near the carboxy terminus of human GAPDH. The immunogen is located within amino acids 230 - 280 of GAPDH.
Purification	Purified IgG
Conjugation	Unconjugated

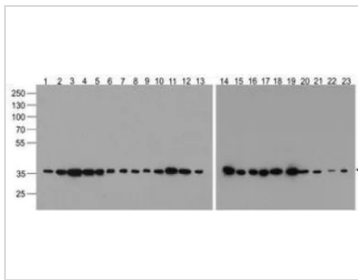
Note

For laboratory research use only. Not for any clinical, therapeutic, or diagnostic use in humans or animals. Not for animal or human consumption.

Purchasers shall not, and agree not to enable third parties to, analyze, copy, reverse engineer or otherwise attempt to determine the structure or sequence of the product.



For full product information, images and publications, please visit our [website](#).

DATA IMAGES

GTX17307 WB Image

WB analysis of multiple cell and tissue lysates (Lanes 1-23 : 293, A431, A549, Daudi, HeLa, HepG2, Jurkat, K562, MOLT, 3T3, Raji, Ramos, U937, human brain, mouse brain, rat brain, rabbit brain, human heart, rat heart, human liver, mouse liver, rat liver, rabbit liver) using GTX17307 GAPDH antibody [12D3H9].

Working concentration : 1 µg/ml



For full product information, images and publications, please visit our [website](#).