

Vinculin antibody [7E10]

Cat. No. GTX17308

Host	Mouse
Clonality	Monoclonal
Isotype	IgG
Applications	WB, ELISA
Reactivity	Human, Mouse, Rat, Rabbit, Chicken

Package
100 µg

Applications

Application Note

*Optimal dilutions/concentrations should be determined by the researcher.

Suggested dilution	Recommended dilution
WB	0.5 - 1 µg/mL
ELISA	Assay dependent

Not tested in other applications.

Calculated MW 124 kDa. ([Note](#))

Properties

Form	Liquid
Buffer	PBS
Preservative	0.02% Sodium azide
Storage	Store as concentrated solution. Centrifuge briefly prior to opening vial. For short-term storage (1-2 weeks), store at 4°C. For long-term storage, aliquot and store at -20°C or below. Avoid multiple freeze-thaw cycles.
Concentration	1 mg/ml (Please refer to the vial label for the specific concentration.)
Immunogen	Vinculin antibody was raised against a 23 amino acid peptide near the amino terminus of human Vinculin. The immunogen is located within amino acids 50 - 100 of Vinculin.
Purification	Protein A purified
Conjugation	Unconjugated

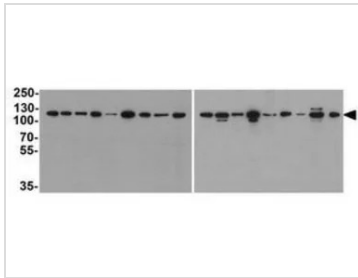
Note For laboratory research use only. Not for any clinical, therapeutic, or diagnostic use in humans or animals. Not for animal or human consumption.

Purchasers shall not, and agree not to enable third parties to, analyze, copy, reverse engineer or otherwise attempt to determine the structure or sequence of the product.



For full product information, images and publications, please visit our [website](#).

DATA IMAGES

**GTX17308 WB Image**

WB analysis of 293, A431, A549, HeLa, HepG2, K562, 3T3, Raji, U937 cell lysate and rat heart, mouse lung, rat lung, mouse spleen, rat spleen, rabbit spleen, mouse brain, rabbit brain and chicken spleen tissue lysate using GTX17308 Vinculin antibody [7E10].

Working concentration : 1 µg/ml



For full product information, images and publications, please visit our [website](#).