

p27 Kip1 (phospho Ser10) antibody

Cat. No. GTX17353

Host	Rabbit
Clonality	Polyclonal
Isotype	IgG
Applications	WB, IHC-P
Reactivity	Human

References (1)

Package

400 µl

Applications

Application Note

*Optimal dilutions/concentrations should be determined by the researcher.

Suggested dilution	Recommended dilution
WB	1:1000
IHC-P	1:50-1:100

Not tested in other applications.

Calculated MW 22 kDa. ([Note](#))

Properties

Form	Liquid
Buffer	PBS
Preservative	0.09% Sodium azide
Storage	Store as concentrated solution. Centrifuge briefly prior to opening vial. For short-term storage (1-2 weeks), store at 4°C. For long-term storage, aliquot and store at -20°C or below. Avoid multiple freeze-thaw cycles.
Concentration	Batch dependent (Please refer to the vial label for the specific concentration.)
Immunogen	KLH conjugated synthetic phosphopeptide corresponding to amino acid residues surrounding S10 of human p27Kip1.
Purification	Protein A purified, followed by peptide affinity purification.
Conjugation	Unconjugated

Note

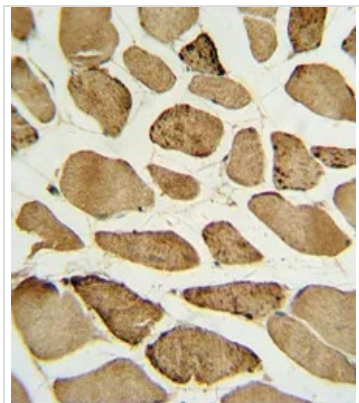
For laboratory research use only. Not for any clinical, therapeutic, or diagnostic use in humans or animals. Not for animal or human consumption.

Purchasers shall not, and agree not to enable third parties to, analyze, copy, reverse engineer or otherwise attempt to determine the structure or sequence of the product.



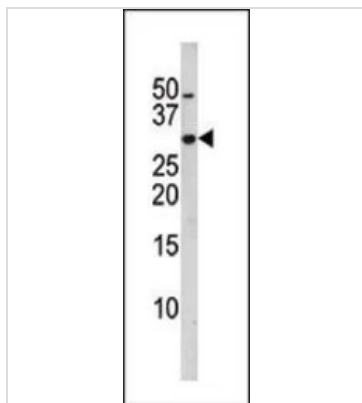
For full product information, images and publications, please visit our [website](#).

DATA IMAGES



GTX17353 IHC-P Image

IHC-P analysis of human skeletal muscle using GTX17353 p27 Kip1 (phospho Ser10) antibody.



GTX17353 WB Image

WB analysis of HL-60 cell lysate using GTX17353 p27 Kip1 (phospho Ser10) antibody.



For full product information, images and publications, please visit our [website](#).