

## LC3A antibody [166AT1234]

**Cat. No. GTX17380**

<b>Host</b>	Mouse
<b>Clonality</b>	Monoclonal
<b>Isotype</b>	IgG1
<b>Applications</b>	WB, ICC/IF, IHC-P, IHC
<b>Reactivity</b>	Human, Mouse, Rat

References ( 16 )

★★★★★ Review ( 1 )

Package  
200 µl

## Applications

**Application Note**

\*Optimal dilutions/concentrations should be determined by the researcher.

Suggested dilution	Recommended dilution
WB	1:1000
ICC/IF	1:25-200
IHC-P	Assay dependent
IHC	Assay dependent

Not tested in other applications.

## Properties

<b>Form</b>	Liquid
<b>Buffer</b>	PBS
<b>Preservative</b>	0.09% Sodium azide
<b>Storage</b>	Store as concentrated solution. Centrifuge briefly prior to opening vial. For short-term storage (1-2 weeks), store at 4°C. For long-term storage, aliquot and store at -20°C or below. Avoid multiple freeze-thaw cycles.
<b>Concentration</b>	Batch dependent (Please refer to the vial label for the specific concentration.)
<b>Immunogen</b>	This LC3A antibody is generated from mouse immunized with a full length recombinant protein of human LC3 (APG8).
<b>Purification</b>	Protein G purified, followed by dialysis against PBS.
<b>Conjugation</b>	Unconjugated

**Note**

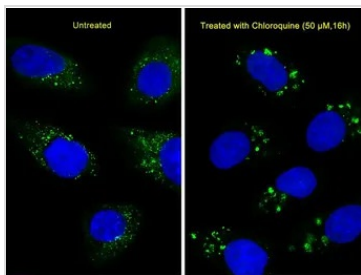
For laboratory research use only. Not for any clinical, therapeutic, or diagnostic use in humans or animals. Not for animal or human consumption.

Purchasers shall not, and agree not to enable third parties to, analyze, copy, reverse engineer or otherwise attempt to determine the structure or sequence of the product.



For full product information, images and publications, please visit our [website](#).

DATA IMAGES



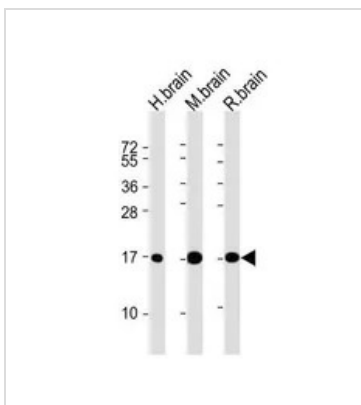
**GTX17380 ICC/IF Image**

ICC/IF analysis of U251 cells untreated (left) or treated with Chloroquine (50 μM, 16h) (right) using GTX17380 LC3A antibody [166AT1234].

Green : LC3A

Blue : DAPI

Dilution : 1:25



**GTX17380 WB Image**

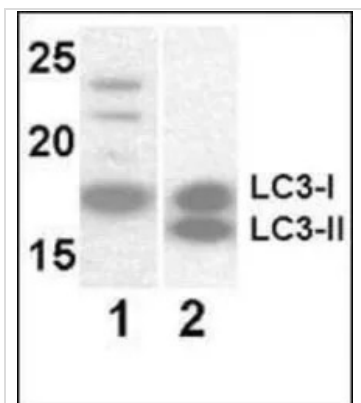
WB analysis of various samples using GTX17380 LC3A antibody [166AT1234].

Lane 1: human brain lysates

Lane 2: mouse brain lysates

Lane 3: rat brain lysates

Dilution : 1:2000



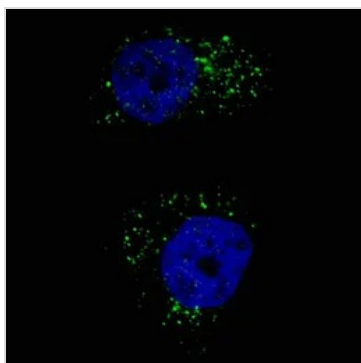
**GTX17380 WB Image**

WB analysis of multiple cell lysate using GTX17380 LC3A antibody [166AT1234].

Lane 1: Y79 (soluble fraction of cell extract)

Lane 2: 293 transfected with human LC3A (whole cell extract)

Dilution : 1:1000



**GTX17380 ICC/IF Image**

ICC/IF analysis of U251 cells treated with Chloroquine (50 μM, 16h) using GTX17380 LC3A antibody [166AT1234].

Green : LC3A

Blue : cell nuclear

Fixation : 4% paraformaldehyde (PFA) (20 min)

Permeabilization : Triton X-100 (0.2%, 30 min)

Dilution : 1:200



For full product information, images and publications, please visit our [website](#).