

## Caspase 6 (cleaved Asp179) antibody

**Cat. No. GTX17383**

<b>Host</b>	Rabbit
<b>Clonality</b>	Polyclonal
<b>Isotype</b>	IgG
<b>Applications</b>	WB, IHC-P
<b>Reactivity</b>	Human

**Package**  
100 µg

## Applications

**Application Note**

\*Optimal dilutions/concentrations should be determined by the researcher.

Suggested dilution	Recommended dilution
WB	1:500~1:1000
IHC-P	1:50~1:100

Not tested in other applications.

**Calculated MW** 33 kDa. ( [Note](#) )**Product Note**

Caspase 6 (Cleaved Asp179) antibody detects endogenous levels of fragment of activated Caspase 6 resulting from cleavage adjacent to Asp179.

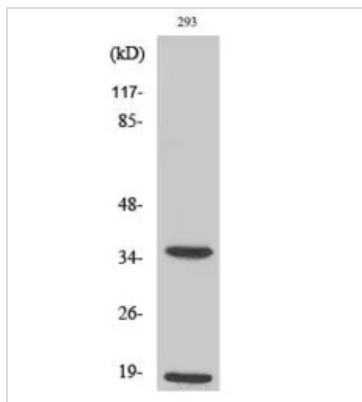
## Properties

<b>Form</b>	Liquid
<b>Buffer</b>	PBS, 150mM NaCl, 50% Glycerol
<b>Preservative</b>	0.02% Sodium azide
<b>Storage</b>	Store as concentrated solution. Centrifuge briefly prior to opening vial. For short-term storage (1-2 weeks), store at 4°C. For long-term storage, aliquot and store at -20°C or below. Avoid multiple freeze-thaw cycles.
<b>Concentration</b>	Batch dependent (Please refer to the vial label for the specific concentration.)
<b>Immunogen</b>	The antiserum was produced against synthesized peptide derived from human Caspase 6 (130-179).
<b>Purification</b>	Purified by antigen-affinity chromatography From serum
<b>Conjugation</b>	Unconjugated
<b>Note</b>	For laboratory use only. Not for any clinical, therapeutic, or diagnostic use in humans or animals. Not for animal or human consumption.



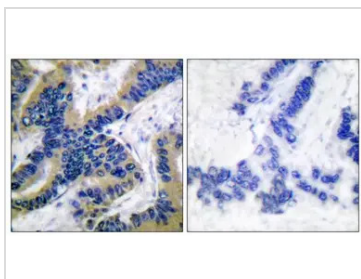
For full product information, images and publications, please visit our [website](#).

## DATA IMAGES



### GTX17383 WB Image

WB analysis of 293 cell lysates using GTX17383 Caspase 6 (Cleaved Asp179) antibody.



### GTX17383 IHC-P Image

IHC-P analysis of human lung carcinoma tissue using GTX17383 Caspase 6 (Cleaved Asp179) antibody. The picture on the right is blocked with the synthesized peptide.



For full product information, images and publications, please visit our [website](#).