

Endothelin A Receptor antibody

Cat. No. GTX17405

Host	Rabbit
Clonality	Polyclonal
Isotype	IgG
Application	WB, ICC/IF, FACS
Reactivity	Human

Package
400 µl

APPLICATION

Application Note

*Optimal dilutions/concentrations should be determined by the researcher.

Suggested dilution	Recommended dilution
WB	1:1000
ICC/IF	1:10-1:50
FACS	1:10-1:50

Not tested in other applications.

Calculated MW 49 kDa. ([Note](#))

PROPERTIES

Form	Liquid
Buffer	PBS
Preservative	0.09% Sodium azide
Storage	Store as concentrated solution. Centrifuge briefly prior to opening vial. For short-term storage (1-2 weeks), store at 4°C. For long-term storage, aliquot and store at -20°C or below. Avoid multiple freeze-thaw cycles.
Concentration	Batch dependent (Please refer to the vial label for the specific concentration.)
Immunogen	KLH conjugated synthetic peptide between 125-154 amino acids from the Central region of human EDNRA.
Purification	Saturated Ammonium Sulfate (SAS) precipitation followed by dialysis against PBS.
Conjugation	Unconjugated

Note

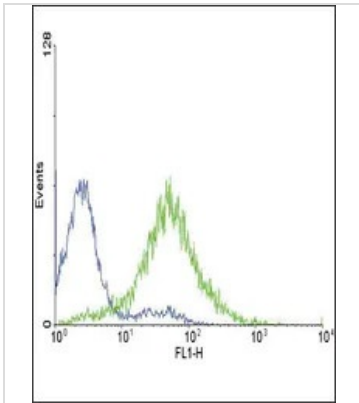
For laboratory research use only. Not for any clinical, therapeutic, or diagnostic use in humans or animals. Not for animal or human consumption.

Purchasers shall not, and agree not to enable third parties to, analyze, copy, reverse engineer or otherwise attempt to determine the structure or sequence of the product.



For full product information, images and publications, please visit our [website](#).

DATA IMAGES

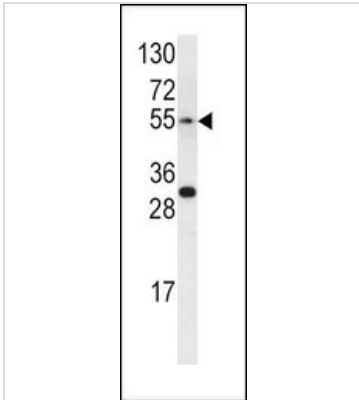


GTx17405 FACS Image

FACS analysis of CEM cells using GTx17405 Endothelin A Receptor antibody.

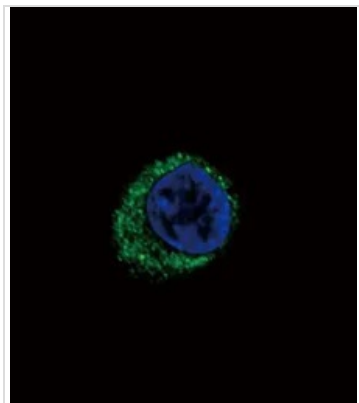
Green : EDNRA

Blue : Isotype control



GTx17405 WB Image

WB analysis of CEM cell lysate (35ug/lane) using GTx17405 Endothelin A Receptor antibody.



GTx17405 ICC/IF Image

ICC/IF analysis of HepG2 cells using GTx17405 Endothelin A Receptor antibody.

Green : Endothelin A Receptor

Blue : DAPI



For full product information, images and publications, please visit our [website](https://www.genetex.com).