

## NTCP antibody

Cat. No. GTX17430

Host	Rabbit
Clonality	Polyclonal
Isotype	IgG
Applications	WB, IHC-P
Reactivity	Human, Mouse, Rat

References ( 2 )

Package

100 µg

## Applications

## Application Note

\*Optimal dilutions/concentrations should be determined by the researcher.

Suggested dilution	Recommended dilution
WB	0.1-0.5µg/ml
IHC-P	0.5-1µg/ml

Not tested in other applications.

Calculated MW 38.12 kDa. ( [Note](#) )

## Properties

Form	Liquid
Buffer	0.1% Na <sub>2</sub> HPO <sub>4</sub> , 0.45% NaCl, 2.5% BSA
Preservative	0.025% Thimerosal, 0.025% Sodium azide
Storage	Store as concentrated solution. Centrifuge briefly prior to opening vial. For short-term storage (1-2 weeks), store at 4°C. For long-term storage, aliquot and store at -20°C or below. Avoid multiple freeze-thaw cycles.
Concentration	500 µg/ml (Please refer to the vial label for the specific concentration.)
Immunogen	A synthetic peptide corresponding to a sequence in the middle region of human SLC10A1(141-154aa YSRGIYDGLKDKV), different from the related rat and mouse sequences by one amino acid.
Purification	Purified by antigen-affinity chromatography
Conjugation	Unconjugated

## Note

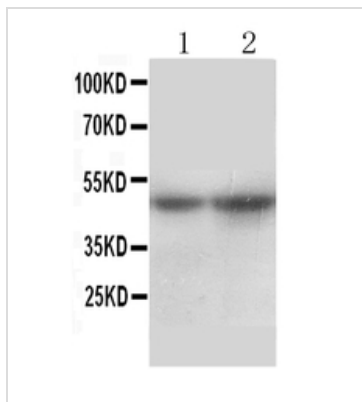
For laboratory research use only. Not for any clinical, therapeutic, or diagnostic use in humans or animals. Not for animal or human consumption.

Purchasers shall not, and agree not to enable third parties to, analyze, copy, reverse engineer or otherwise attempt to determine the structure or sequence of the product.



For full product information, images and publications, please visit our [website](#).

## DATA IMAGES



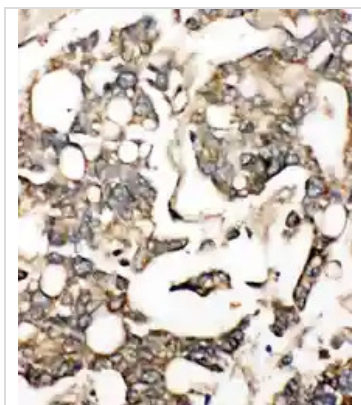
### GTX17430 WB Image

WB analysis of various samples using GTX17430 NTCP antibody.

Lane 1 : rat liver tissue lysate at 50ug

Lane 2 : mouse liver tissue lysate at 50ug

Dilution : 0.5 µg/mL



### GTX17430 IHC-P Image

IHC-P analysis of human liver cancer tissue using GTX17430 NTCP antibody.



For full product information, images and publications, please visit our [website](#).