

M-Cadherin antibody

Cat. No. GTX17434

Host	Rabbit
Clonality	Polyclonal
Isotype	IgG
Applications	WB, IHC-P
Reactivity	Human, Mouse, Rat

Package
100 µl

Applications

Application Note

WB: 1:500 - 1:1000, IHC: 1:50 - 1:200

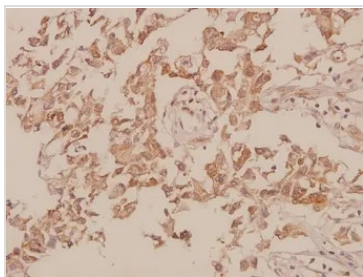
Calculated MW 89 kDa. ([Note](#))

Product Note M-cadherin (A108) pAb detects endogenous levels of M-cadherin protein.

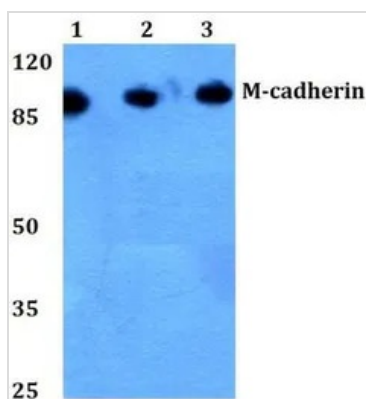
Properties

Form	Liquid
Buffer	PBS
Preservative	15mM Sodium azide
Storage	Store as concentrated solution. Centrifuge briefly prior to opening vial. For short-term storage (1-2 weeks), store at 4°C. For long-term storage, aliquot and store at -20°C or below. Avoid multiple freeze-thaw cycles.
Concentration	1 mg/ml (Please refer to the vial label for the specific concentration.)
Immunogen	Synthetic peptide, corresponding to amino acids 80-130 of Human M-cadherin.
Purification	The antibody was affinity-purified from rabbit antiserum by affinity-chromatography using epitope-specific immunogen
Conjugation	Unconjugated
Note	<p>For laboratory research use only. Not for any clinical, therapeutic, or diagnostic use in humans or animals. Not for animal or human consumption.</p> <p>Purchasers shall not, and agree not to enable third parties to, analyze, copy, reverse engineer or otherwise attempt to determine the structure or sequence of the product.</p>

For full product information, images and publications, please visit our [website](#).

DATA IMAGES

GTX17434 IHC-P Image

Immunohistochemistry (IHC) analyzes of M-cadherin (GTX17434) pAb in paraffin-embedded human breast carcinoma tissue at 1:50.


GTX17434 WB Image

Western blot (WB) analysis of M-cadherin (GTX17434) pAb at 1:500 dilution Lane1:HEK293T whole cell lysate Lane2:Mouse brain tissue lysate Lane3:Rat brain tissue lysate



For full product information, images and publications, please visit our [website](https://www.genetex.com).