

Phosphoserine antibody [3C171]

Cat. No. GTX17465

| | |
|--------------|---------------------|
| Host | Mouse |
| Clonality | Monoclonal |
| Isotype | IgG1 |
| Applications | WB, Dot, ELISA |
| Reactivity | Species independent |

Package

50 µl

Applications

Application Note

*Optimal dilutions/concentrations should be determined by the researcher.

| Suggested dilution | Recommended dilution |
|--------------------|----------------------|
| WB | 1:500-1:1000 |
| Dot | Assay dependent |
| ELISA | 1:8000-1:16,000 |

Note : Do not use milk as a blocking agent or in diluents, as milk casein is phosphorylated at several serine residues. BSA is recommended instead.

Not tested in other applications.

Product Note

Recognizes phosphorylated serine both as free amino acid or when coupled to carriers such as BSA or KLH. Does not crossreact with non-phosphorylated serine, phosphothreonine, phosphotyrosine, AMP or ATP. Certain proteins known to contain phosphorylated serine may not be recognized by this antibody because of steric hindrance of the recognition site.

Properties

| | |
|--------------|--|
| Form | Liquid |
| Buffer | Ascites |
| Preservative | 15mM Sodium azide |
| Storage | Store as concentrated solution. Centrifuge briefly prior to opening vial. For short-term storage (1-2 weeks), store at 4°C. For long-term storage, aliquot and store at -20°C or below. Avoid multiple freeze-thaw cycles. |
| Immunogen | Phosphoserine conjugated to KLH. |
| Purification | Unpurified |
| Conjugation | Unconjugated |



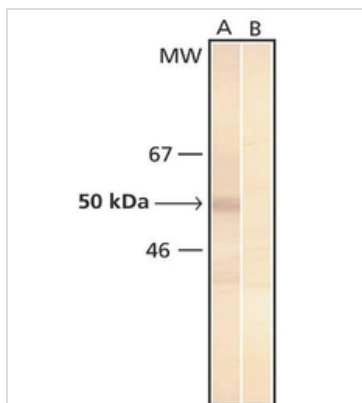
For full product information, images and publications, please visit our [website](#).

For laboratory research use only. Not for any clinical, therapeutic, or diagnostic use in humans or animals. Not for animal or human consumption.

Note

Purchasers shall not, and agree not to enable third parties to, analyze, copy, reverse engineer or otherwise attempt to determine the structure or sequence of the product.

DATA IMAGES



GTX17465 WB Image

WB analysis of rat brain cortex tissue lysate using GTX17465 Phosphoserine antibody [3C171].



For full product information, images and publications, please visit our [website](#).