

FGF2 antibody

Cat. No. GTX17476

Host	Rabbit
Clonality	Polyclonal
Isotype	IgG
Applications	WB, IHC-P, ELISA, Functional Assay
Reactivity	Human

Package
50 µg

Applications

Application Note

*Optimal dilutions/concentrations should be determined by the researcher.

Suggested dilution	Recommended dilution
WB	0.1 - 0.2 ug/ml
IHC-P	0.25 - 0.5 ug/ml
ELISA	0.5 - 2.0 ug/ml
Functional Assay	Assay dependent

Not tested in other applications.

Calculated MW 31 kDa. ([Note](#))

Properties

Form	Liquid
Buffer	PBS
Preservative	No preservatives
Storage	Store as concentrated solution. Centrifuge briefly prior to opening vial. For short-term storage (1-2 weeks), store at 4°C. For long-term storage, aliquot and store at -20°C or below. Avoid multiple freeze-thaw cycles.
Concentration	1 mg/ml (Please refer to the vial label for the specific concentration.)
Immunogen	Recombinant human FGF basic
Purification	Affinity chromatography.
Conjugation	Unconjugated

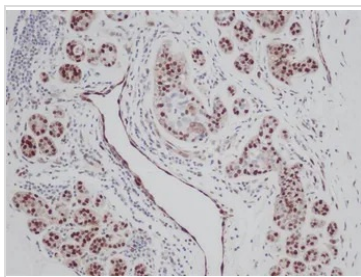
Note

For laboratory research use only. Not for any clinical, therapeutic, or diagnostic use in humans or animals. Not for animal or human consumption.

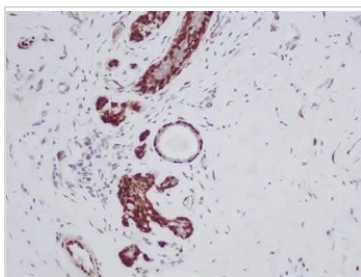
Purchasers shall not, and agree not to enable third parties to, analyze, copy, reverse engineer or otherwise attempt to determine the structure or sequence of the product.



For full product information, images and publications, please visit our [website](#).

DATA IMAGES

GTX17476 IHC-P Image

Staining of formalin fixed, paraffin embedded human breast invasive ductal carcinoma with Rabbit anti Human FGF-basic.


GTX17476 IHC-P Image

Staining of formalin fixed, paraffin embedded human breast invasive ductal carcinoma with Rabbit anti Human FGF-basic.



For full product information, images and publications, please visit our [website](#).