

CXCL8 / IL8 antibody

Cat. No. GTX17483

Host	Rabbit
Clonality	Polyclonal
Isotype	IgG
Applications	WB, IHC-P
Reactivity	Human

Package
100 µl

Applications

Application Note

*Optimal dilutions/concentrations should be determined by the researcher.

Suggested dilution	Recommended dilution
WB	1:500-2000
IHC-P	1:50-200

Not tested in other applications.

Calculated MW 11 kDa. ([Note](#))

Product Note IL8 Antibody detects endogenous levels of total IL8

Properties

Form	Liquid
Storage	Store as concentrated solution. Centrifuge briefly prior to opening vial. For short-term storage (1-2 weeks), store at 4°C. For long-term storage, aliquot and store at -20°C or below. Avoid multiple freeze-thaw cycles.
Concentration	1 mg/ml (Please refer to the vial label for the specific concentration.)
Immunogen	A specific peptide of human IL8
Purification	Purified by antigen-affinity chromatography
Conjugation	Unconjugated

Note

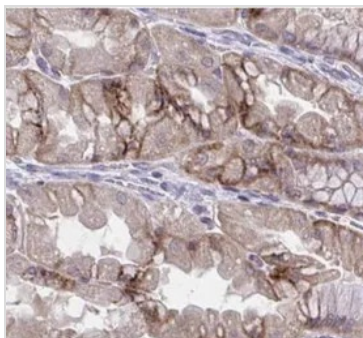
For laboratory research use only. Not for any clinical, therapeutic, or diagnostic use in humans or animals. Not for animal or human consumption.

Purchasers shall not, and agree not to enable third parties to, analyze, copy, reverse engineer or otherwise attempt to determine the structure or sequence of the product.



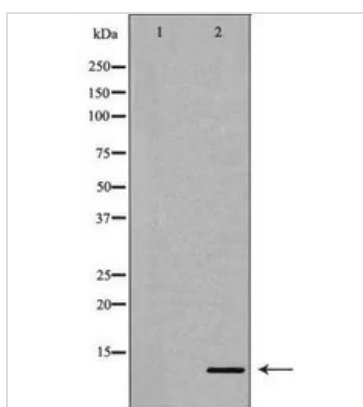
For full product information, images and publications, please visit our [website](#).

DATA IMAGES



GTX17483 IHC-P Image

IHC-P analysis of human testis tissue using GTX17483 CXCL8 / IL8 antibody.



GTX17483 WB Image

WB analysis of human liver tissue lysate using GTX17483 CXCL8 / IL8 antibody. The left lane was treated with the antigen-specific peptide.



For full product information, images and publications, please visit our [website](https://www.genetex.com).