

Myosin skeletal fast antibody [MY-32]

Cat. No. GTX17485

Host	Mouse
Clonality	Monoclonal
Isotype	IgG1
Applications	WB, ICC/IF, IHC-P
Reactivity	Human, Mouse, Rat, Rabbit, Bovine, Cat, Chicken, Guinea pig

References (2)

Package

100 µl

Applications

Application Note

*Optimal dilutions/concentrations should be determined by the researcher.

Suggested dilution	Recommended dilution
WB	Assay dependent
ICC/IF	Assay dependent
IHC-P	Assay dependent

Not tested in other applications.

Product Note

Monoclonal Anti-Skeletal Myosin is specific for the myosin heavy chain. It does not stain human or animal cardiac or smooth muscle myosin or cells grown by tissue culture (nonmuscle myosin). It has been demonstrated on human skeletal muscle that the antibody stains the fast twitch (type II) isomyosin molecules. Monoclonal Anti-Skeletal Myosin antibody does react with human rhabdomyosarcomas.

Properties

Form	Liquid
Buffer	Ascites
Preservative	15mM Sodium azide
Storage	Store as concentrated solution. Centrifuge briefly prior to opening vial. For short-term storage (1-2 weeks), store at 4°C. For long-term storage, aliquot and store at -20°C or below. Avoid multiple freeze-thaw cycles.
Concentration	Batch dependent (Please refer to the vial label for the specific concentration.)
Immunogen	Rabbit muscle myosin
Conjugation	Unconjugated

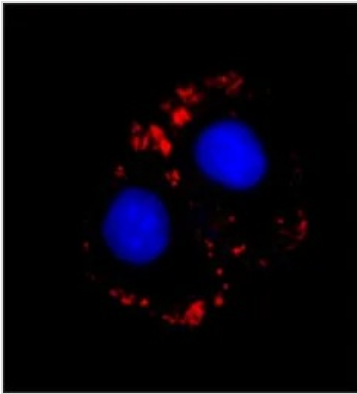
Note

For laboratory research use only. Not for any clinical, therapeutic, or diagnostic use in humans or animals. Not for animal or human consumption.

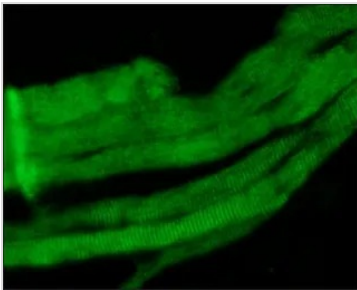
Purchasers shall not, and agree not to enable third parties to, analyze, copy, reverse engineer or otherwise attempt to determine the structure or sequence of the product.



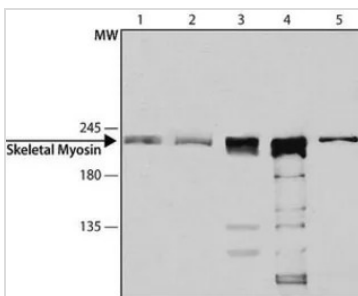
For full product information, images and publications, please visit our [website](#).

DATA IMAGES

GTx17485 ICC/IF Image

A10 cells were fixed and permeabilized with methanol followed by methanol:acetone. Fixed cells were stained with 1:500 Monoclonal Anti-Myosin (Skeletal, Fast), Clone: MY-32. The antibody was developed using Goat Anti-Mouse IgG, Cy3 conjugate. Cells were counterstained with DAPI (blue) to stain nuclei.


GTx17485 IHC-P Image

Staining of formalin-fixed, paraffin-embedded human skeletal muscle sections with Mouse Anti-Myosin (Skeletal, Fast) Clone: MY-32 diluted 1:400 using Goat Anti-Mouse IgG, FITC-conjugate.


GTx17485 WB Image

Cell and tissue lysates were separated on SDS-PAGE and probed with Mouse Anti-Myosin (Skeletal, Fast) Clone: MY-32 diluted to 1:750. The antibody was developed using Goat Anti-Mouse IgG-Peroxidase and a chemiluminescent substrate. Lanes 1. H9C2; 2. A10; 3. C2C12; 4. Mouse Skeletal Muscle; 5. Rat Skeletal Muscle



For full product information, images and publications, please visit our [website](https://www.genetex.com).