

CHCHD2 antibody

Cat. No. GTX17498

Host	Rabbit
Clonality	Polyclonal
Isotype	IgG
Applications	WB, IHC-P, FCM, ELISA
Reactivity	Human

Package
400 µl

Applications

Application Note

*Optimal dilutions/concentrations should be determined by the researcher.

Suggested dilution	Recommended dilution
WB	Assay dependent
IHC-P	Assay dependent
FCM	Assay dependent
ELISA	Assay dependent

Not tested in other applications.

Calculated MW 16 kDa. ([Note](#))

Properties

Form	Liquid
Buffer	PBS
Preservative	0.09% Sodium azide
Storage	Store as concentrated solution. Centrifuge briefly prior to opening vial. For short-term storage (1-2 weeks), store at 4°C. For long-term storage, aliquot and store at -20°C or below. Avoid multiple freeze-thaw cycles.
Concentration	Batch dependent (Please refer to the vial label for the specific concentration.)
Immunogen	A KLH conjugated synthetic peptide between 74-103 amino acids from the Central region of human CHCHD2.
Purification	This antibody is purified through a protein A column, followed by peptide affinity purification.
Conjugation	Unconjugated

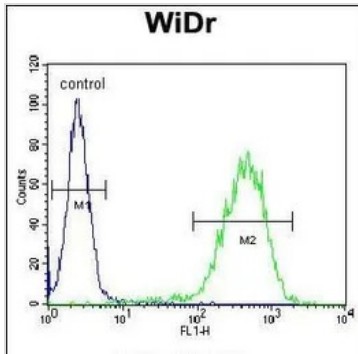
Note

For laboratory research use only. Not for any clinical, therapeutic, or diagnostic use in humans or animals. Not for animal or human consumption.

Purchasers shall not, and agree not to enable third parties to, analyze, copy, reverse engineer or otherwise attempt to determine the structure or sequence of the product.



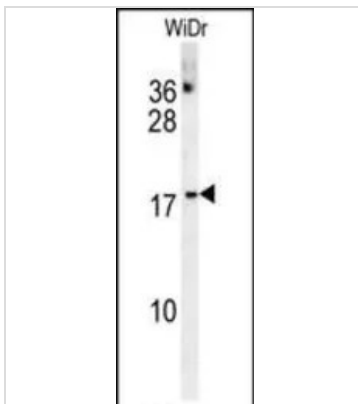
For full product information, images and publications, please visit our [website](#).

DATA IMAGES

GTX17498 FCM Image

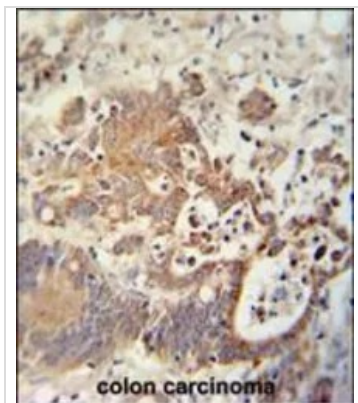
FACS analysis of WiDr cells using GTX17498 CHCHD2 antibody.

Green : primary antibody

Blue : negative control


GTX17498 WB Image

WB analysis of WiDr cell line lysates (35ug/lane) using GTX17498 CHCHD2 antibody.


GTX17498 IHC-P Image

IHC-P analysis of human colon carcinoma using GTX17498 CHCHD2 antibody.



For full product information, images and publications, please visit our [website](https://www.genetex.com).