

alpha Smooth Muscle Actin antibody [9H15] (PE)

Cat. No. GTX17501

Host	Mouse
Clonality	Monoclonal
Isotype	IgG2a
Applications	FCM
Reactivity	Human, Mouse, Rat, Rabbit

Package
100 test

Applications

Application Note

*Optimal dilutions/concentrations should be determined by the researcher.

Suggested dilution	Recommended dilution
FCM	Neat 10µl labels up to 1x10 ⁶ cells

Not tested in other applications.

Properties

Form	Liquid
Buffer	0.5% BSA
Preservative	0.09% Sodium azide
Storage	Store as concentrated solution. Centrifuge briefly prior to opening vial. Store at 4°C. DO NOT FREEZE. Protect from light.
Concentration	Batch dependent (Please refer to the vial label for the specific concentration.)
Immunogen	Synthetic decapeptide corresponding to the N-terminal residues of human Alpha-Smooth Muscle Actin.
Purification	Protein A purified
Conjugation	Phycoerythrin (PE) Wavelength

Note

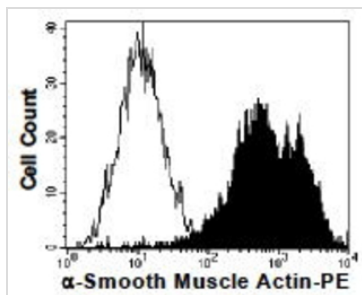
For laboratory research use only. Not for any clinical, therapeutic, or diagnostic use in humans or animals. Not for animal or human consumption.

Purchasers shall not, and agree not to enable third parties to, analyze, copy, reverse engineer or otherwise attempt to determine the structure or sequence of the product.



For full product information, images and publications, please visit our [website](#).

DATA IMAGES



GTx17501 FCM Image

FACS analysis of L929 cells using GTx17501 alpha Smooth Muscle Actin antibody [9H15] (PE).



For full product information, images and publications, please visit our [website](#).