

## Myosin Light Chain 2 (MLC-2v) (phospho Tyr118) antibody

Cat. No. GTX17511

Host	Rabbit
Clonality	Polyclonal
Isotype	IgG
Applications	WB, ICC/IF
Reactivity	Human

Package  
100 µl

## Applications

## Application Note

\*Optimal dilutions/concentrations should be determined by the researcher.

Suggested dilution	Recommended dilution
WB	1:500-1:1000
ICC/IF	1:100-1:200

Not tested in other applications.

Calculated MW	19 kDa. ( <a href="#">Note</a> )
Product Note	This antibody detects Myosin light chain 2, slow skeletal/ventricular muscle isoform (MLC-2v) protein when phosphorylated at Ser15.

## Properties

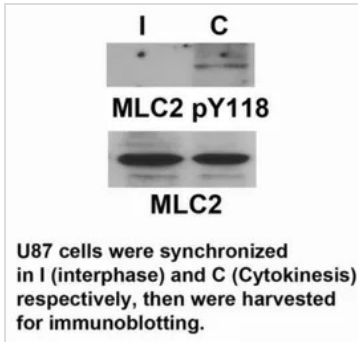
Form	Liquid
Buffer	PBS, 150mM NaCl, 50% Glycerol
Preservative	0.02% Sodium azide
Storage	Store as concentrated solution. Centrifuge briefly prior to opening vial. For short-term storage (1-2 weeks), store at 4°C. For long-term storage, aliquot and store at -20°C or below. Avoid multiple freeze-thaw cycles.
Concentration	1 mg/ml (Please refer to the vial label for the specific concentration.)
Immunogen	Peptide sequence around phosphorylation site of tyrosine 118 (A-D-Y(p)-V-R) derived from human Myosin Light Chain 2 (MLC-2v).
Purification	Purified by antigen-affinity chromatography. Non-phospho specific antibodies were removed by chromatography using non-phosphopeptide.
Conjugation	Unconjugated

For full product information, images and publications, please visit our [website](#).

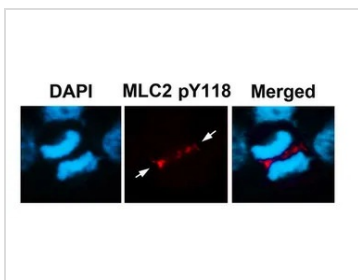
For laboratory research use only. Not for any clinical, therapeutic, or diagnostic use in humans or animals. Not for animal or human consumption.

**Note**

Purchasers shall not, and agree not to enable third parties to, analyze, copy, reverse engineer or otherwise attempt to determine the structure or sequence of the product.

**DATA IMAGES**

**GTX17511 WB Image**

WB analysis of extracts from U87 cells synchronized in interphase ( I ) and cytokinesis ( C ) using GTX17511 Myosin Light Chain 2 (MLC-2v) (phospho Tyr118) antibody.


**GTX17511 ICC/IF Image**

ICC/IF analysis of methanol-fixed U87 cells using GTX17511 Myosin Light Chain 2 (MLC-2v) (phospho Tyr118) antibody.



For full product information, images and publications, please visit our [website](https://www.genetex.com).