

Leptin antibody

Cat. No. GTX17531

| | |
|---------------------|------------|
| Host | Chicken |
| Clonality | Polyclonal |
| Isotype | IgY |
| Applications | WB, ELISA |
| Reactivity | Mouse, Rat |

Package
500 µg

Applications

Application Note

ELISA: 1/1000 - 1/2000. WB: 1/1000 - 1/2000. Predicted molecular weight: 16 kDa. Optimal dilutions/concentrations should be determined by the end user.

Calculated MW 19 kDa. ([Note](#))

Properties

| | |
|----------------------|--|
| Form | Liquid |
| Buffer | PBS |
| Preservative | 0.02% Sodium azide |
| Storage | Store as concentrated solution. Centrifuge briefly prior to opening vial. For short-term storage (1-2 weeks), store at 4°C. For long-term storage, aliquot and store at -20°C or below. Avoid multiple freeze-thaw cycles. |
| Concentration | 1 mg/ml (Please refer to the vial label for the specific concentration.) |
| Immunogen | Recombinant full length protein (Rat). |
| Purification | IgY fraction Purified from chicken Egg yolk about 85% pure |
| Conjugation | Unconjugated |

Note

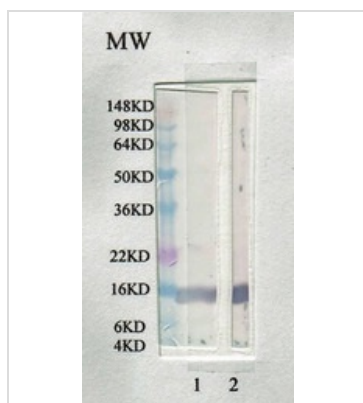
For laboratory research use only. Not for any clinical, therapeutic, or diagnostic use in humans or animals. Not for animal or human consumption.

Purchasers shall not, and agree not to enable third parties to, analyze, copy, reverse engineer or otherwise attempt to determine the structure or sequence of the product.



For full product information, images and publications, please visit our [website](#).

DATA IMAGES



GTx17531 WB Image

Western blot analysis of rat leptin with

1) GTx17629 rabbit anti rat leptin at 1:2000 and

2) GTx17531 chicken anti rat leptin at 1:2000



For full product information, images and publications, please visit our [website](https://www.genetex.com).