

CD22 antibody [2D6]

Cat. No. GTX17558

Host	Rat
Clonality	Monoclonal
Isotype	IgG1
Applications	ICC/IF, IHC-P, IHC-Fr, FCM, IP, Activation
Reactivity	Mouse

References (4)

Package

500 µg

Applications

Application Note

*Optimal dilutions/concentrations should be determined by the researcher.

Suggested dilution	Recommended dilution
ICC/IF	Assay dependent
IHC-P	Assay dependent
IHC-Fr	Assay dependent
FCM	Assay dependent
IP	Assay dependent
Activation	Assay dependent

Not tested in other applications.

Properties

Form	Liquid
Buffer	Borate buffered saline
Preservative	No preservatives
Storage	Store as concentrated solution. Centrifuge briefly prior to opening vial. Store at 4°C.
Concentration	0.5 mg/ml (Please refer to the vial label for the specific concentration.)
Immunogen	Splenic lymphocyte plasma membranes from CBA x C57 F1 mice
Conjugation	Unconjugated

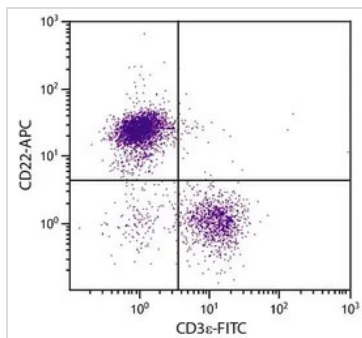
Note

For laboratory research use only. Not for any clinical, therapeutic, or diagnostic use in humans or animals. Not for animal or human consumption.

Purchasers shall not, and agree not to enable third parties to, analyze, copy, reverse engineer or otherwise attempt to determine the structure or sequence of the product.



For full product information, images and publications, please visit our [website](#).

DATA IMAGES

GTX17558 FCM Image

FACS analysis of BALB/c mouse splenocytes using GTX17558 CD22 antibody [2D6] and Rat Anti-Mouse CD3ε antibody.



For full product information, images and publications, please visit our [website](#).