

GPM6A antibody

Cat. No. GTX17572

Host	Rabbit
Clonality	Polyclonal
Isotype	IgG
Applications	WB, ICC/IF
Reactivity	Human, Rat

Package
100 µl

Applications

Application Note

*Optimal dilutions/concentrations should be determined by the researcher.

Suggested dilution	Recommended dilution
WB	Assay dependent
ICC/IF	Assay dependent

Not tested in other applications.

Calculated MW 31 kDa. ([Note](#))

Properties

Form	Liquid
Buffer	PBS, 2% Sucrose
Preservative	0.09% Sodium azide
Storage	Store as concentrated solution. Centrifuge briefly prior to opening vial. For short-term storage (1-2 weeks), store at 4°C. For long-term storage, aliquot and store at -20°C or below. Avoid multiple freeze-thaw cycles.
Concentration	0.5 - 1 mg/ml (Please refer to the vial label for the specific concentration.)
Immunogen	Synthetic peptide located within the following region: IAMVHYLMVLSANWAYVKDACRMQKYEDIKSKEEQELHDIHSTRSKERLN
Purification	Purified by affinity chromatography
Conjugation	Unconjugated

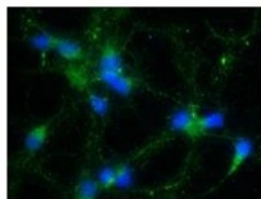
Note

For laboratory research use only. Not for any clinical, therapeutic, or diagnostic use in humans or animals. Not for animal or human consumption.

Purchasers shall not, and agree not to enable third parties to, analyze, copy, reverse engineer or otherwise attempt to determine the structure or sequence of the product.



For full product information, images and publications, please visit our [website](#).

DATA IMAGES


Green: GPM6A
Blue: DAPI

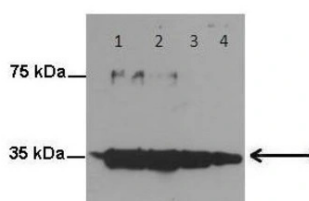
GTX17572 ICC/IF Image

ICC/IF analysis of rat hippocampal culture neurons using GTX17572 GPM6A antibody.

Green : GPM6A

Blue : DAPI

Dilution: 1:250


GTX17572 WB Image

WB analysis of human brain using GTX17572 GPM6A antibody.

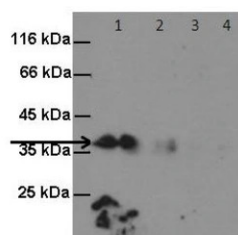
Lane 1: 250ug rat hippocampal culture neurons

Lane 2: 200ug rat hippocampal culture neurons

Lane 3: 100ug rat hippocampal culture neurons

Lane 4: 50ug rat hippocampal culture neurons

Dilution: 1:1000


GTX17572 WB Image

WB analysis of human brain using GTX17572 GPM6A antibody.

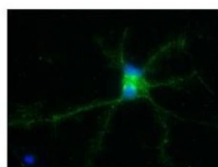
Lane 1: 400ug rat hippocampal

Lane 2: 300ug rat hippocampal

Lane 3: 200ug rat hippocampal

Lane 4: 100ug rat hippocampal

Dilution: 1:1000



Green: GPM6A
Blue: DAPI

GTX17572 ICC/IF Image

ICC/IF analysis of rat hippocampal culture neurons using GTX17572 GPM6A antibody.

Green : GPM6A

Blue : DAPI

Dilution: 1:250



For full product information, images and publications, please visit our [website](https://www.genetex.com).