

GLP1R antibody

Cat. No. GTX17606

Host	Goat
Clonality	Polyclonal
Isotype	IgG
Applications	WB, ICC/IF, FCM
Reactivity	Human, Rat, Pig

References (2)

Package

100 µg

Applications

Application Note

*Optimal dilutions/concentrations should be determined by the researcher.

Suggested dilution	Recommended dilution
WB	0.1-1µg/ml
ICC/IF	10µg/ml
FCM	10µg/ml

Note : Permeabilization : 0.5% Triton

Not tested in other applications.

Calculated MW 53 kDa. ([Note](#))

Properties

Form	Liquid
Buffer	TBS, 0.5% BSA
Preservative	0.02% Sodium azide
Storage	Store as concentrated solution. Centrifuge briefly prior to opening vial. For short-term storage (1-2 weeks), store at 4°C. For long-term storage, aliquot and store at -20°C or below. Avoid multiple freeze-thaw cycles.
Concentration	0.5 mg/ml (Please refer to the vial label for the specific concentration.)
Immunogen	Peptide with sequence C-QHQWDGLLSYQD, from the internal region of the protein sequence according to NP_002053.3.
Purification	Ammonium sulphate precipitation followed by peptide affinity purification. From serum
Conjugation	Unconjugated



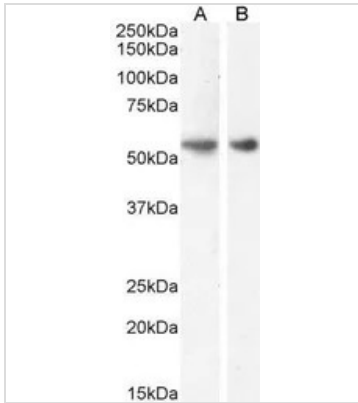
For full product information, images and publications, please visit our [website](#).

For laboratory research use only. Not for any clinical, therapeutic, or diagnostic use in humans or animals. Not for animal or human consumption.

Note

Purchasers shall not, and agree not to enable third parties to, analyze, copy, reverse engineer or otherwise attempt to determine the structure or sequence of the product.

DATA IMAGES



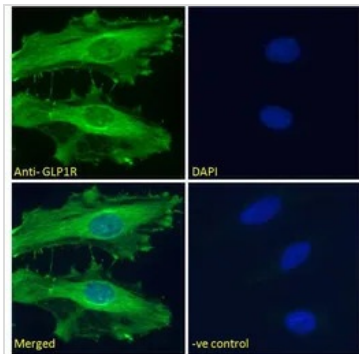
GTX17606 WB Image

WB analysis of various samples using GTX17606 GLP1R antibody.

Lane A : Rat brain (dilution: 1 μ g/ml)

Lane B : Pig brain (dilution: 0.1 μ g/ml)

Loading : 35 μ g



GTX17606 ICC/IF Image

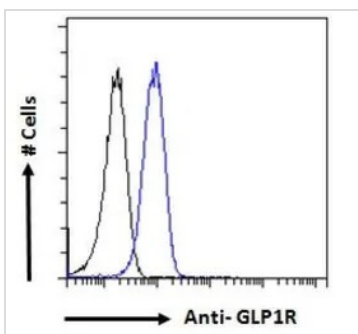
ICC/IF analysis of PFA-fixed HeLa cells using GTX17606 GLP1R antibody compared to isotype control antibody(-ve control).

Green : Primary antibody

Blue : DAPI

Permeabilization : 0.15% Triton

Dilution : 10 μ g/ml



GTX17606 FCM Image

FACS analysis of PFA-fixed HeLa cells using GTX17606 GLP1R antibody.

Permeabilized : 0.5% Triton

Dilution : 10 μ g/ml

Blue : Primary antibody

Black : Isotype control



For full product information, images and publications, please visit our [website](#).