

IL6 antibody

Cat. No. GTX17623

Host	Rabbit
Clonality	Polyclonal
Isotype	IgG
Applications	WB, ICC/IF, IHC-P, FCM, ELISA
Reactivity	Human, Mouse, Rat

References (8)

Package

100 µl

Applications

Application Note

*Optimal dilutions/concentrations should be determined by the researcher.

Suggested dilution	Recommended dilution
WB	1:300-1000
ICC/IF	Assay dependent
IHC-P	1:50-400
FCM	Assay dependent
ELISA	Assay dependent

Not tested in other applications.

Calculated MW 24 kDa. ([Note](#))

Properties

Form	Liquid
Buffer	1% BSA, 50% Glycerol
Preservative	0.09% Sodium azide
Storage	Store as concentrated solution. Centrifuge briefly prior to opening vial. For short-term storage (1-2 weeks), store at 4°C. For long-term storage, aliquot and store at -20°C or below. Avoid multiple freeze-thaw cycles.
Concentration	1 mg/ml (Please refer to the vial label for the specific concentration.)
Immunogen	KLH conjugated synthetic peptide derived from mouse IL6(130-160).
Purification	Protein A purified
Conjugation	Unconjugated



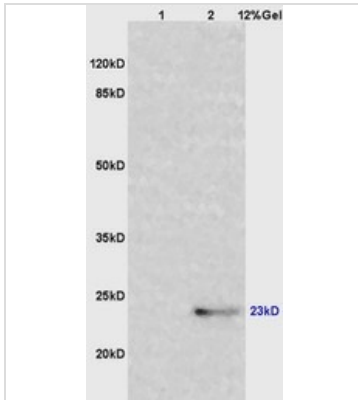
For full product information, images and publications, please visit our [website](#).

For laboratory research use only. Not for any clinical, therapeutic, or diagnostic use in humans or animals. Not for animal or human consumption.

Note

Purchasers shall not, and agree not to enable third parties to, analyze, copy, reverse engineer or otherwise attempt to determine the structure or sequence of the product.

DATA IMAGES



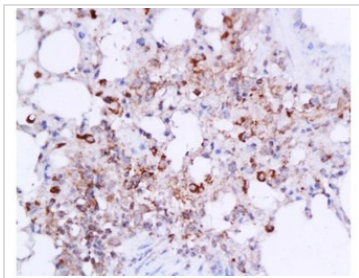
GTX17623 WB Image

WB analysis of various samples using GTX17623 IL6 antibody.

Dilution : 1:200

Lane 1 : mouse lung lysates

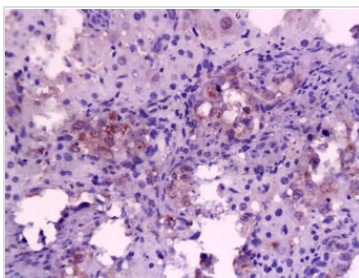
Lane 2 : protein provided by the end user lysates



GTX17623 IHC-P Image

IHC-P analysis of mouse lung tissue using GTX17623 IL6 antibody.

Dilution : 1:200



GTX17623 IHC-P Image

IHC-P analysis of rat liver tissue using GTX17623 IL6 antibody.

Dilution : 1:200



For full product information, images and publications, please visit our [website](#).