

CD73 antibody [AD2]

Cat. No. GTX17626

Host	Mouse
Clonality	Monoclonal
Isotype	IgG1
Applications	FCM, MS, CyTOF
Reactivity	Human

Package
100 µg

Applications

Application Note

*Optimal dilutions/concentrations should be determined by the researcher.

Suggested dilution	Recommended dilution
FCM	Assay dependent
MS	Assay dependent
CyTOF	Assay dependent

Not tested in other applications.

Properties

Form	Liquid
Buffer	PBS
Preservative	15mM Sodium azide
Storage	Store as concentrated solution. Centrifuge briefly prior to opening vial. Store at 4°C. DO NOT FREEZE.
Concentration	1 mg/ml (Please refer to the vial label for the specific concentration.)
Purification	Protein A purified
Conjugation	Unconjugated

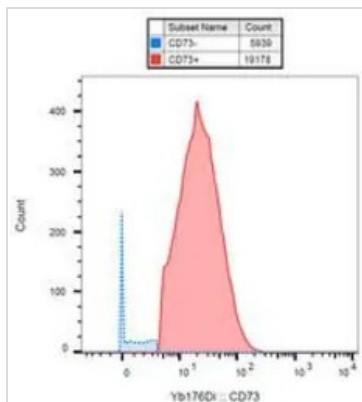
Note

For laboratory research use only. Not for any clinical, therapeutic, or diagnostic use in humans or animals. Not for animal or human consumption.

Purchasers shall not, and agree not to enable third parties to, analyze, copy, reverse engineer or otherwise attempt to determine the structure or sequence of the product.



For full product information, images and publications, please visit our [website](#).

DATA IMAGES

GTX17626 CyTOF Image

CyToF analysis of Ficoll-Paque separated PBMC cells using GTX17625 CD73 antibody [AD2] conjugated with isotope Yb176.



For full product information, images and publications, please visit our [website](https://www.genetex.com).