

## CD73 antibody [AD2] (PE-Cy7)

**Cat. No. GTX17626-10**

<b>Host</b>	Mouse
<b>Clonality</b>	Monoclonal
<b>Isotype</b>	IgG1
<b>Applications</b>	FCM
<b>Reactivity</b>	Human

**Package**  
100 test

## Applications

**Application Note**

\*Optimal dilutions/concentrations should be determined by the researcher.

Suggested dilution	Recommended dilution
FCM	Assay dependent

**Note : Do not need a permeabilization step.**

Not tested in other applications.

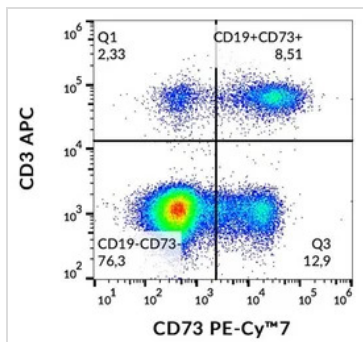
## Properties

<b>Form</b>	Liquid
<b>Buffer</b>	PBS
<b>Preservative</b>	15mM Sodium azide
<b>Storage</b>	Store as concentrated solution. Centrifuge briefly prior to opening vial. Store at 4°C. DO NOT FREEZE. Protect from light.
<b>Concentration</b>	Batch dependent (Please refer to the vial label for the specific concentration.)
<b>Immunogen</b>	Pre-B leukemia cell line
<b>Purification</b>	Purified IgG
<b>Conjugation</b>	Phycoerythrin-Cyanine7 (PE-Cy7) <a href="#">Wavelength</a>
<b>Note</b>	For laboratory use only. Not for any clinical, therapeutic, or diagnostic use in humans or animals. Not for animal or human consumption. Cy and CyDye are trademarks of GE Healthcare.



For full product information, images and publications, please visit our [website](#).

DATA IMAGES



**GTX17626-10 FCM Image**

FACS analysis of human peripheral blood using GTX17626-10 CD73 antibody [AD2] (PE-Cy7).



For full product information, images and publications, please visit our [website](#).