

HSL antibody

Cat. No. GTX17652

Host	Chicken
Clonality	Polyclonal
Isotype	IgY
Application	WB, ELISA
Reactivity	Mouse

Package
500 µg

APPLICATION

Application Note

ELISA: 1/1000 - 1/5000. WB: 1/1000 - 1/5000. Detects a band of approximately 83 kDa in various fat cell lysates from mouse and rat, and an additional band at about 40kDa (unknown). Optimal dilutions/concentrations should be determined by the end user.

PROPERTIES

Form	Liquid
Buffer	PBS
Preservative	0.02% Sodium azide
Storage	Store as concentrated solution. Centrifuge briefly prior to opening vial. For short-term storage (1-2 weeks), store at 4°C. For long-term storage, aliquot and store at -20°C or below. Avoid multiple freeze-thaw cycles.
Concentration	1 mg/ml (Please refer to the vial label for the specific concentration.)
Immunogen	Synthetic peptide: SGRKPQKTTSTPT. Synthetic peptide: NSQEEAEAKDEV. Synthetic peptide: FGEHYKRNETGL
Purification	IgY fraction
Conjugation	Unconjugated

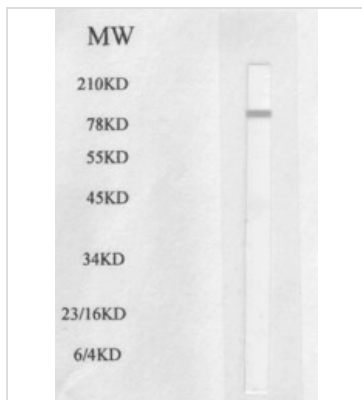
Note

For laboratory research use only. Not for any clinical, therapeutic, or diagnostic use in humans or animals. Not for animal or human consumption.

Purchasers shall not, and agree not to enable third parties to, analyze, copy, reverse engineer or otherwise attempt to determine the structure or sequence of the product.



For full product information, images and publications, please visit our [website](#).

DATA IMAGES

GTX17652 WB Image

Western blot analysis using mouse epididymal fat cell lysate



For full product information, images and publications, please visit our [website](https://www.genetex.com).