

Mouse alpha Synuclein protein (active, monomer)

Cat. No. GTX17670-pro**Applications** Functional Assay**Species** Mouse**Package**

200 µg, 100 µg

Applications

Application Note

100 µM alpha synuclein protein monomer (GTX17670-pro) seeded with 10 nM alpha synuclein protein PFF (GTX17671-pro) in 25 µM Thioflavin T (PBS pH 7.4, 100 µl reaction volume) generated an increased fluorescence intensity after incubation at 37°C with shaking at 600 rpm. Fluorescence was measured by excitation at 450 nm and emission at 485 nm on a Molecular Devices Gemini XPS microplate reader.

Properties

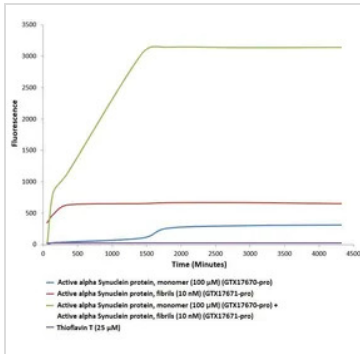
Form Liquid**Buffer** PBS**Preservative** No preservatives**Storage** Store as concentrated solution. Aliquot and store at -20°C or below. Avoid freeze-thaw cycles.**Concentration** Batch dependent (Please refer to the vial label for the specific concentration.)**Region/Sequence** Full-length without tagged; MDVFMKGLSK AKEGVVAAAE KTKQGVAAEA GKTKEGVLYV GSKTKEGVWH GVTVAEKTKEQVTNVGGAV VTGVTAVAQK TVEGAGNIAA ATGFVKKDQM GKGEEGYPQE GILEDMPVDP GSEAYEMPSE EGYQDYEPEA**Expression System** E. coli**Purification** Purified by ion-exchange chromatography**Purity** > 95% by SDS-PAGE**Conjugation** Unconjugated**Note**

For laboratory research use only. Not for any clinical, therapeutic, or diagnostic use in humans or animals. Not for animal or human consumption.

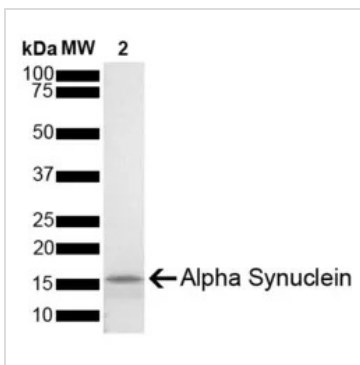
Purchasers shall not, and agree not to enable third parties to, analyze, copy, reverse engineer or otherwise attempt to determine the structure or sequence of the product.



For full product information, images and publications, please visit our [website](#).

DATA IMAGES

GTX17670-pro Image

Active alpha synuclein preformed fibrils (GTX17671-pro) seed the formation of new alpha synuclein fibrils from the pool of alpha synuclein monomers (GTX17670-pro). Thioflavin T is a fluorescent dye that binds to beta sheet-rich structures, such as those in alpha synuclein fibrils. Upon binding, the emission spectrum of the dye experiences a red-shift, and increased fluorescence intensity. Thioflavin T emission curves show increased fluorescence (correlated to alpha synuclein protein aggregation) over time when 10 nM of active alpha synuclein preformed fibrils (GTX17671-pro) is combined with 100 μM of alpha synuclein monomer (GTX17670-pro), as compared to active alpha synuclein preformed fibrils (GTX17671-pro) or alpha synuclein monomer (GTX17670-pro) alone. Thioflavin T ex = 450 nm, em = 485 nm.


GTX17670-pro Image

SDS-PAGE of ~14 kDa Mouse alpha Synuclein protein (active, monomer) (GTX17670-pro).

Lane 1: Molecular Weight Ladder (MW). Lane 2: Mouse alpha Synuclein protein (active, monomer) (2 μg) (GTX17670-pro).



For full product information, images and publications, please visit our [website](https://www.genetex.com).