

Mouse alpha Synuclein protein (active, Pre-Formed Fibrils)

Cat. No. GTX17671-pro

Applications Functional Assay**Species** Mouse

References (1)

Package

200 µg, 100 µg

PRODUCT

Summary Active Mouse Recombinant Alpha Synuclein Pre-formed Fibrils (Type 1)

Applications

Application Note

Endogenous alpha-synuclein phosphorylation. 100 µM alpha synuclein protein monomer (GTX17670-pro) seeded with 10 nM alpha synuclein protein PFF (GTX17671-pro) in 25 µM Thioflavin T (PBS pH 7.4, 100 µl reaction volume) generated an increased fluorescence intensity after incubation at 37°C with shaking at 600 rpm for 24 hours. Fluorescence was measured by excitation at 450 nm and emission at 485 nm on a Molecular Devices Gemini XPS microplate reader.

*For best results, sonicate immediately prior to use.

Properties

Form Liquid**Buffer** PBS**Preservative** No preservative**Storage** Store as concentrated solution. Aliquot and store at -80°C. Avoid freeze-thaw cycles.**Concentration** Batch dependent (Please refer to the vial label for the specific concentration.)**Region/Sequence** Full-length without tagged; MDVFMKGLSK AKEGVAAAE KTKQGVAAEA GKTKEGVLYV GSKTKEGVWH GVTVAEKT
EQVTNVGGAV VTGVTAVAQK TVEGAGNIAA ATGFVKKDQM GKGEEGYPQE GILEDMPVDP GSEAYEMPSE EGYQDYEP**Expression System** E. coli**Purification** Purified by ion-exchange chromatography**Purity** > 95% by SDS-PAGE**Conjugation** Unconjugated

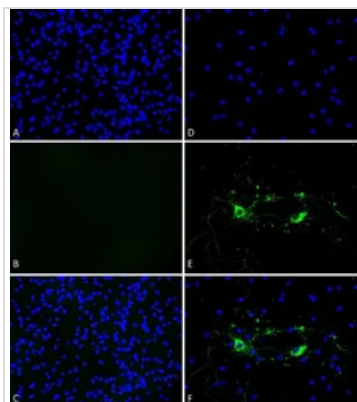
Note

For laboratory research use only. Not for any clinical, therapeutic, or diagnostic use in humans or animals. Not for animal or human consumption.

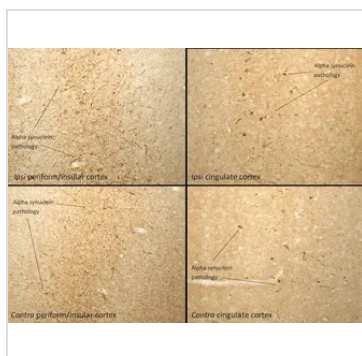
Purchasers shall not, and agree not to enable third parties to, analyze, copy, reverse engineer or otherwise attempt to determine the structure or sequence of the product.



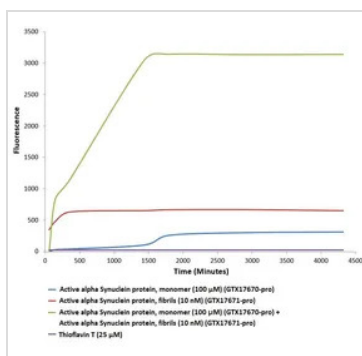
For full product information, images and publications, please visit our [website](#).

DATA IMAGES

GTx17671-pro Functional Assay Image

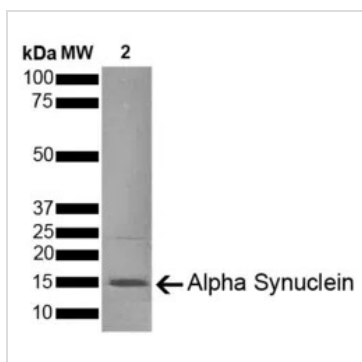
Primary rat hippocampal neurons (DIV16) show lewy body inclusion formation and loss of cells when treated with active mouse Alpha Synuclein Protein Preformed Fibrils (GTx17671-pro) at 4 $\mu\text{g}/\text{ml}$ (D-F) on DIV12, but not when treated with a control (A-C). Tissue: Primary hippocampal neurons. Species: Sprague-Dawley rat. Fixation: 3% formaldehyde from PFA for 20 min. Blocker: 1:1 PBS:LiCOR Odyssey Block (LiCOR, 927-40010) and 30 mL/mL of 0.1% triton-X 100 for 30 min. Primary Antibody: Mouse anti-pSer129 Antibody (1:1000) and Rabbit anti-pSer129 (1:800) for 24 hours at 4°C. Secondary Antibody: ATTO 546 Donkey Anti-Mouse (1:700) and ATTO 488 Donkey Anti-Rabbit (1:700) for 1 hour at RT (composite green). Counterstain: Hoechst (blue) nuclear stain at 1:3000 for 1 hour at RT. Localization: Lewy body inclusions. Magnification: 20x.


GTx17671-pro Functional Assay Image

Immunohistochemistry analysis of rat brain injected with active mouse alpha synuclein PFFs (GTx17671-pro). Species: Female Sprague-Dawley Rat. Rat was injected with 2 μL active mouse alpha synuclein PFFs (GTx17671-pro) in each of 2 injection sites: AP+1.6, ML+2.4, DV-4.2 from skull; and AP-1.4, ML+0.2, DV-2.8 from skull. 30 days post-injection. Fixation: Saline perfusion followed by 4% PFA fixation for 48 hrs. Secondary Antibody: Biotin-SP Donkey Anti-Rabbit IgG (H+L) at 1:500 for 2 hours in cold room with shaking. ABC signal amplification, DAB staining. Magnification: 20X. Alpha synuclein pathology is seen in the periform/insular cortex and the cingulate cortex on both the same (ipsi) and opposite (contra) sides as the injection sites.


GTx17671-pro Image

Active alpha synuclein preformed fibrils (GTx17671-pro) seed the formation of new alpha synuclein fibrils from the pool of alpha synuclein monomers (GTx17670-pro). Thioflavin T is a fluorescent dye that binds to beta sheet-rich structures, such as those in alpha synuclein fibrils. Upon binding, the emission spectrum of the dye experiences a red-shift, and increased fluorescence intensity. Thioflavin T emission curves show increased fluorescence (correlated to alpha synuclein protein aggregation) over time when 10 nM of active alpha synuclein preformed fibrils (GTx17671-pro) is combined with 100 μM of alpha synuclein monomer (GTx17670-pro), as compared to active alpha synuclein preformed fibrils (GTx17671-pro) or alpha Synuclein monomer (GTx17670-pro) alone. Thioflavin T $\text{ex} = 450 \text{ nm}$, $\text{em} = 485 \text{ nm}$.


GTx17671-pro Image

SDS-PAGE of ~14 kDa active Mouse alpha Synuclein protein (active, fibrils) (GTx17671-pro). Lane 1: Molecular Weight Ladder (MW). Lane 2: active Mouse alpha Synuclein protein (active, fibrils) (2 μg) (GTx17671-pro).



For full product information, images and publications, please visit our [website](https://www.genetex.com).