

Human Tau441 (2N4R) protein, mutant P301S (Pre-formed Fibrils)

Cat. No. GTX17674-pro

Applications	Functional Assay
Species	Human

Package

200 µg, 100 µg

Applications

Application Note

Thioflavin T emission curve shows increased fluorescence (correlated to tau protein fibrillation) when active tau PFFs are combined with active tau monomers.

*For best results, sonicate immediately prior to use.

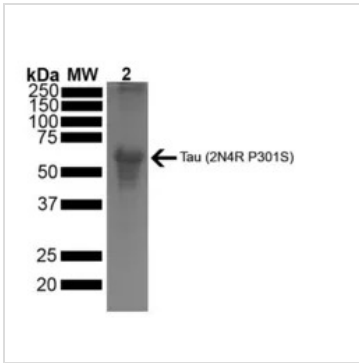
Properties

Form	Liquid
Buffer	10mM HEPES, 100mM NaCl
Preservative	No preservatives
Storage	Store as concentrated solution. Aliquot and store at -80°C. Avoid freeze-thaw cycles.
Concentration	Batch dependent (Please refer to the vial label for the specific concentration.)
Region/Sequence	Full-length without tagged; MAEPRQEFEV MEDHAGTYGL GDRKDQGGYT MHQDQEGD TD AGLKESPLQT PTEDGSEEPG SETSDAKSTP TAEDVTAPLV DEGAPGKQAA AQPHTIEPEG TTAEAEAGIGD TPSLEDEAAG HVTQARMVSK SKDGTGSDDK KAKGADGKTK IATPRGAAPP GQKQGANATR IPAKTPPAPK TPPSSGEPK SGDRSGYSSP GSPGTPGSRS RTPSLTPPT REPKKVAVVR TPPKSPSSAK SRLQTAPVPM PDLKNVSKI GSTENLKHQP GGGKVQIINK KLDLSNVQSK CGSKDNIKHVSGGGSVQIVY KPVDSLKVT S KCGSLGNIHH KPGGGQVEVK SEKLDKDRV QSKIGSLDNI THVPGGGNKK IETHKLTFRE NAKAKTDHGA EIVYKSPVVS GDTSPRHLSN VSSTGSIDMV DSPQLATLAD EVSASLAKQG L
Expression System	E. coli
Purification	Purified by ion-exchange chromatography
Conjugation	Unconjugated
Note	For laboratory research use only. Not for any clinical, therapeutic, or diagnostic use in humans or animals. Not for animal or human consumption. Purchasers shall not, and agree not to enable third parties to, analyze, copy, reverse engineer or otherwise attempt to determine the structure or sequence of the product.



For full product information, images and publications, please visit our [website](#).

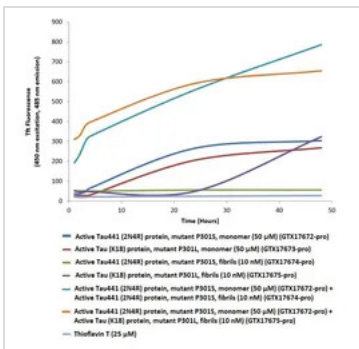
DATA IMAGES



GTX17674-pro Image

SDS-PAGE of ~67 kDa Human Tau441 (2N4R) protein, mutant P301S (preformed fibrils (PFFs)) (GTX17674-pro).

Lane 1: MW Ladder. Lane 2: Human Tau441 (2N4R) protein, mutant P301S (fibrils)(GTX17674-pro).



GTX17674-pro Image

Thioflavin T is a fluorescent dye that binds to beta sheet-rich structures such as those in tau fibrils. Upon binding, the emission spectrum of the dye experiences a red-shift, and increased fluorescence intensity. Thioflavin T emission curves show increased fluorescence (correlated to tau aggregation) when tau preformed fibrils (GTX17674-pro) are combined with tau monomers (GTX17672-pro). The preformed fibrils seed the formation of new fibrils from a pool of monomers. Thioflavin T λ_{ex} = 450 nm, λ_{em} = 485 nm.



For full product information, images and publications, please visit our [website](#).