

Human Tau (K18) protein, mutant P301L (Pre-formed Fibrils)

Cat. No. GTX17675-pro

Applications Functional Assay**Species** Human**Package**

200 µg, 100 µg

Applications

Application Note

Thioflavin T emission curve shows increased fluorescence (correlated to tau protein fibrillation) when active tau PFFs are combined with active tau monomers.

*For best results, sonicate immediately prior to use.

Properties

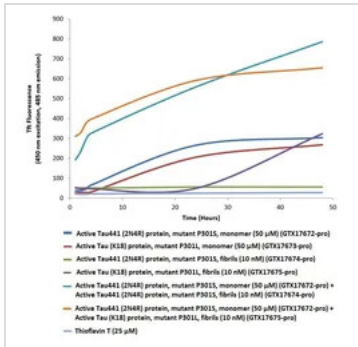
Form Liquid**Buffer** 10mM HEPES, 100mM NaCl**Preservative** No preservative**Storage** Store as concentrated solution. Aliquot and store at -80°C. Avoid freeze-thaw cycles.**Concentration** Batch dependent (Please refer to the vial label for the specific concentration.)**Region/Sequence** Partial Tau without tagged; SRLQTAPVPM PDLKNVSKI GSTENLKHQP GGGKVQIINK KLDLSNVQSK
CGSKDNIKHVLGGGSVQIVY KPVDSLKVTs KCGSLGNIHH KPGGGQVEVK SEKLDFKDRV QSKIGSLDNI THVPGGGNKK
IETHKLTFRE**Expression System** E. coli**Purification** Purified by ion-exchange chromatography**Conjugation** Unconjugated**Note**

For laboratory research use only. Not for any clinical, therapeutic, or diagnostic use in humans or animals. Not for animal or human consumption.

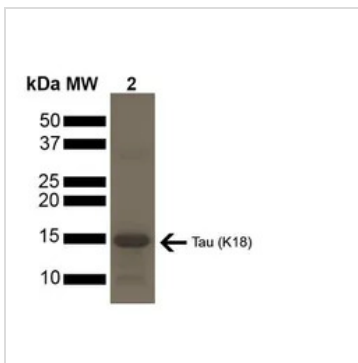
Purchasers shall not, and agree not to enable third parties to, analyze, copy, reverse engineer or otherwise attempt to determine the structure or sequence of the product.



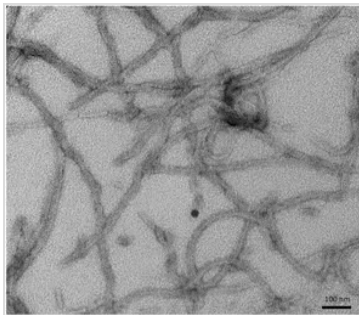
For full product information, images and publications, please visit our [website](#).

DATA IMAGES

GTX17675-pro Image

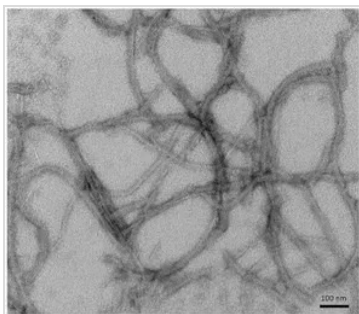
Thioflavin T is a fluorescent dye that binds to beta sheet-rich structures, such as those in tau fibrils. Upon binding, the emission spectrum of the dye experiences a red-shift and increased fluorescence intensity. Thioflavin T emission curves show increased fluorescence (correlated to tau aggregation) over time in tau preformed fibrils (GTX17675-pro). Tau preformed fibrils (GTX17675-pro) seed the formation of new tau fibrils when combined with tau monomers (GTX17672-pro). Thioflavin T λ_{ex} = 450 nm, λ_{em} = 485 nm.


GTX17675-pro Image

SDS-PAGE of ~15 kDa Human Tau (K18) protein, mutant P301L (preformed fibrils (PFFs)) (GTX17675-pro). Lane 1: MW Ladder. Lane 2: Human Tau (K18) protein, mutant P301L (fibrils) (GTX17675-pro).


GTX17675-pro Image

TEM image of GTX17675-pro Human Tau (K18) protein, mutant P301L (Pre-formed Fibrils).


GTX17675-pro Image

TEM image of GTX17675-pro Human Tau (K18) protein, mutant P301L (Pre-formed Fibrils).



For full product information, images and publications, please visit our [website](https://www.genetex.com).