

## Human Tau (K18) protein, mutant P301L (Pre-formed Fibrils)

## Cat. No. GTX17675-pro

|                     |                  |
|---------------------|------------------|
| <b>Applications</b> | Functional Assay |
| <b>Species</b>      | Human            |

## Package

200 µg, 100 µg

## Applications

## Application Note

Thioflavin T emission curve shows increased fluorescence (correlated to tau protein fibrillation) when active tau PFFs are combined with active tau monomers.

\*For best results, sonicate immediately prior to use.

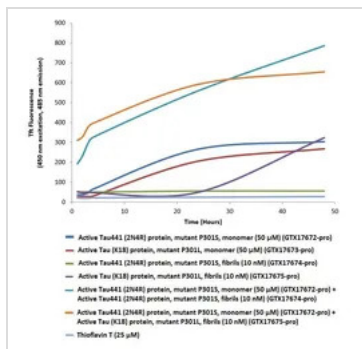
## Properties

|                          |  |
|--------------------------|--|
| <b>Form</b>              | Liquid   |
| <b>Buffer</b>            | 10mM HEPES, 100mM NaCl   |
| <b>Preservative</b>      | No preservatives   |
| <b>Storage</b>           | Store as concentrated solution. Aliquot and store at -80°C. Avoid freeze-thaw cycles.  |
| <b>Concentration</b>     | Batch dependent (Please refer to the vial label for the specific concentration.)   |
| <b>Region/Sequence</b>   | Partial Tau without tagged; SRLQTAPVPM PDLKNVSKI GSTENLKHQP GGGKVQIINK KLDLSNVQSK CGSKDNIKHVLLGGGSVQIVY KPVDSLKVT S KCGSLGNIHH KPGGGQVEVK SEKLDLFDKDRV QSKIGSLDNI THVPGGGNKK IETHKLTFRE  |
| <b>Expression System</b> | E. coli  |
| <b>Purification</b>      | Purified by ion-exchange chromatography  |
| <b>Conjugation</b>       | Unconjugated   |
| <b>Note</b>              | For laboratory research use only. Not for any clinical, therapeutic, or diagnostic use in humans or animals. Not for animal or human consumption.<br><br>Purchasers shall not, and agree not to enable third parties to, analyze, copy, reverse engineer or otherwise attempt to determine the structure or sequence of the product. |



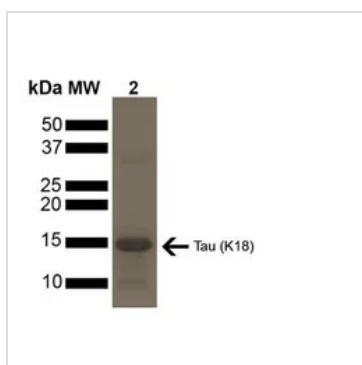
For full product information, images and publications, please visit our [website](#).

DATA IMAGES



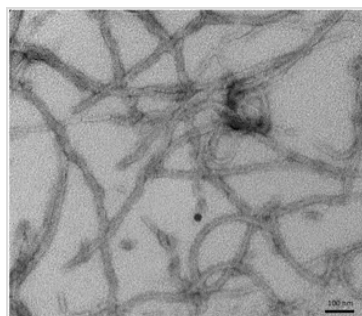
**GTX17675-pro Image**

Thioflavin T is a fluorescent dye that binds to beta sheet-rich structures, such as those in tau fibrils. Upon binding, the emission spectrum of the dye experiences a red-shift and increased fluorescence intensity. Thioflavin T emission curves show increased fluorescence (correlated to tau aggregation) over time in tau preformed fibrils (GTX17675-pro). Tau preformed fibrils (GTX17675-pro) seed the formation of new tau fibrils when combined with tau monomers (GTX17672-pro). Thioflavin T  $\lambda_{ex}$  = 450 nm,  $\lambda_{em}$  = 485 nm.



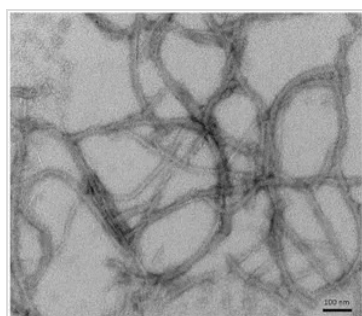
**GTX17675-pro Image**

SDS-PAGE of ~15 kDa Human Tau (K18) protein, mutant P301L (preformed fibrils (PFFs)) (GTX17675-pro). Lane 1: MW Ladder. Lane 2: Human Tau (K18) protein, mutant P301L (fibrils) (GTX17675-pro).



**GTX17675-pro Image**

TEM image of GTX17675-pro Human Tau (K18) protein, mutant P301L (Pre-formed Fibrils).



**GTX17675-pro Image**

TEM image of GTX17675-pro Human Tau (K18) protein, mutant P301L (Pre-formed Fibrils).



For full product information, images and publications, please visit our [website](#).