

## PLK1 (phospho Thr210) antibody [HAO-16]

Cat. No. GTX17683

Host	Rabbit
Clonality	Monoclonal
Isotype	IgG
Application	WB
Reactivity	Human

Package  
100 µg

## APPLICATION

## Application Note

\*Optimal dilutions/concentrations should be determined by the researcher.

Suggested dilution	Recommended dilution
WB	1:1000-1:2000

Not tested in other applications.

Calculated MW 68 kDa. ( [Note](#) )

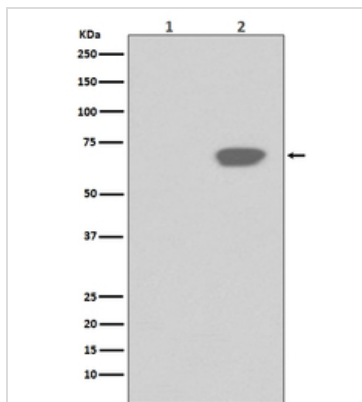
## PROPERTIES

Form	Liquid
Buffer	PBS, 150mM NaCl, 50% Glycerol
Preservative	0.02% Sodium azide
Storage	Store as concentrated solution. Centrifuge briefly prior to opening vial. For short-term storage (1-2 weeks), store at 4°C. For long-term storage, aliquot and store at -20°C or below. Avoid multiple freeze-thaw cycles.
Concentration	0.5-1 mg/ml (Please refer to the vial label for the specific concentration.)
Immunogen	A synthesized peptide derived from human PLK1
Purification	Purified by affinity chromatography
Conjugation	Unconjugated
Note	For laboratory use only. Not for any clinical, therapeutic, or diagnostic use in humans or animals. Not for animal or human consumption.



For full product information, images and publications, please visit our [website](#).

## DATA IMAGES



### GTX17683 WB Image

WB analysis of HeLa treated with nocodazole lysate using GTX17683 PLK1 (phospho Thr210) antibody [HAO-16].

Lane 1 : HeLa

Lane 2 : HeLa treated with nocodazole

Loading : 50µg



For full product information, images and publications, please visit our [website](https://www.genetex.com).