

Laminin alpha 3A antibody [BG5]

Cat. No. GTX17685

Host	Mouse
Clonality	Monoclonal
Isotype	IgG2a
Applications	WB, IHC-P, IHC-Fr, IP, ELISA, Purification
Reactivity	Human

References (3)

Package

100 µl

PRODUCT

Summary

Laminins, which consist of three subunits called alpha, beta and gamma chains, are major cell-adhesive components of extracellular matrix, especially basement membranes (BMs). The laminin family is constituted of over 15 isoforms, and each member is expressed in a tissue-specific manner and plays a differential role in each tissue. In the case of laminin alpha 3 chain, there are two splicing variants, the truncated form alpha 3A and the full-length alpha 3B. Laminin-3A32 (Lm3A32), formerly called laminin-5 or -5A, is composed of alpha 3A, Beta 3 and gamma 2 chains and distributed in the skin, esophagus, lung, breast and other epithelial tissues. This antibody highly detects laminin-3A32 in the basement membranes of normal epithelial tissues and of relatively benign or differentiated carcinomas. It may also detect laminin-3A11. As its sister clone F7 is specific for alpha 3B chain, the combination of BG5 and F7 is an important tool to investigate the difference of the full-length and truncated alpha 3 laminins. These antibodies, together with the anti-gamma 2 antibody P2H capable of detecting invasive cancers, are powerful tools in pathological analyses of human cancers.

Applications

Application Note

*Optimal dilutions/concentrations should be determined by the researcher.

Suggested dilution	Recommended dilution
WB	1:1000-1:10000
IHC-P	Assay dependent
IHC-Fr	Assay dependent
IP	Assay dependent
ELISA	Assay dependent
Purification	Assay dependent

Not tested in other applications.

Product Note

This antibody specifically detects alpha 3A in IHC. However, this clone may cross react with alpha 3B in ELISA, IP and Western Blot.

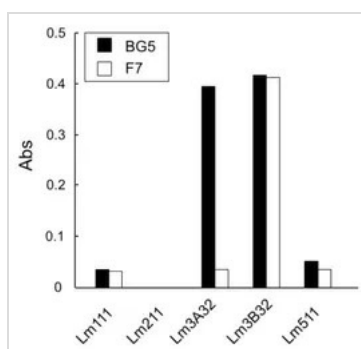
Properties

Form	Liquid
Buffer	Ascites
Preservative	No preservatives

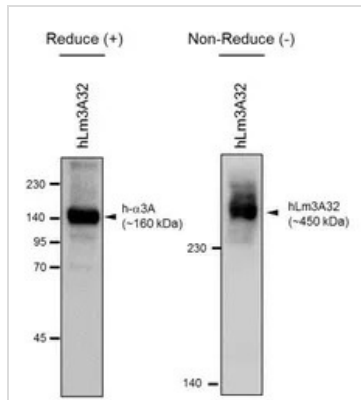


For full product information, images and publications, please visit our [website](#).

Storage	Store as concentrated solution. Centrifuge briefly prior to opening vial. For short-term storage (1-2 weeks), store at 4°C. For long-term storage, aliquot and store at -20°C or below. Avoid multiple freeze-thaw cycles.
Immunogen	Recombinant human laminin-alpha 3B N-term ~190 kDa fragment. Alpha 3A chain is truncated form ,and alpha 3B chain is full length.
Purification	Unpurified
Conjugation	Unconjugated
Note	For laboratory use only. Not for any clinical, therapeutic, or diagnostic use in humans or animals. Not for animal or human consumption.

DATA IMAGES

GTx17685 ELISA Image

ELISA analysis of five recombinant human laminins using GTx17684 Laminin alpha 3B antibody [F7] and GTx17685 Laminin alpha 3A antibody [BG5].

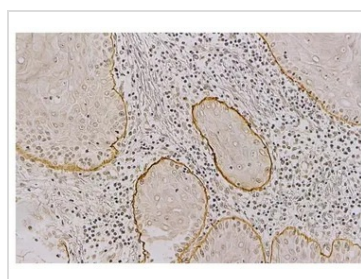

GTx17685 WB Image

WB analysis of recombinant human intact laminin 3A32 protein (containing alpha 3A, Beta 3, gamma 2 chains) using GTx17685 Laminin alpha 3A antibody [BG5].

Dilution : 1:10000

Reduced condition : 7% gel

Non-reduced condition : 5% gel


GTx17685 IHC-P Image

IHC-P analysis of skin cancer tissue using GTx17685 Laminin alpha 3A antibody [BG5].



For full product information, images and publications, please visit our [website](https://www.genetex.com).