

## Laminin alpha 3A antibody [BG5]

Cat. No. GTX17685

<b>Host</b>	Mouse
<b>Clonality</b>	Monoclonal
<b>Isotype</b>	IgG2a
<b>Applications</b>	WB, IHC-P, IHC-Fr, IP, ELISA, Purification
<b>Reactivity</b>	Human

References ( 3 )

Package

100 µl

## PRODUCT

## Summary

Laminins, which consist of three subunits called alpha, beta and gamma chains, are major cell-adhesive components of extracellular matrix, especially basement membranes (BMs). The laminin family is constituted of over 15 isoforms, and each member is expressed in a tissue-specific manner and plays a differential role in each tissue. In the case of laminin alpha 3 chain, there are two splicing variants, the truncated form alpha 3A and the full-length alpha 3B. Laminin-3A32 (Lm3A32), formerly called laminin-5 or -5A, is composed of alpha 3A, Beta 3 and gamma 2 chains and distributed in the skin, esophagus, lung, breast and other epithelial tissues. This antibody highly detects laminin-3A32 in the basement membranes of normal epithelial tissues and of relatively benign or differentiated carcinomas. It may also detect laminin-3A11. As its sister clone F7 is specific for alpha 3B chain, the combination of BG5 and F7 is an important tool to investigate the difference of the full-length and truncated alpha 3 laminins. These antibodies, together with the anti-gamma 2 antibody P2H capable of detecting invasive cancers, are powerful tools in pathological analyses of human cancers.

## Applications

## Application Note

\*Optimal dilutions/concentrations should be determined by the researcher.

Suggested dilution	Recommended dilution
WB	1:1000-1:10000
IHC-P	Assay dependent
IHC-Fr	Assay dependent
IP	Assay dependent
ELISA	Assay dependent
Purification	Assay dependent

Not tested in other applications.

## Product Note

This antibody specifically detects alpha 3A in IHC. However, this clone may cross react with alpha 3B in ELISA, IP and Western Blot.

## Properties

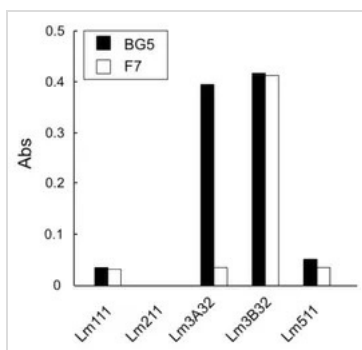
<b>Form</b>	Liquid
<b>Buffer</b>	Ascites
<b>Preservative</b>	No preservative



For full product information, images and publications, please visit our [website](#).

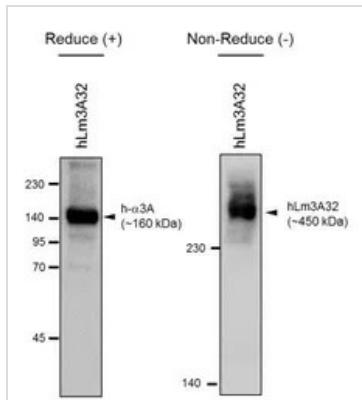
<b>Storage</b>	Store as concentrated solution. Centrifuge briefly prior to opening vial. For short-term storage (1-2 weeks), store at 4°C. For long-term storage, aliquot and store at -20°C or below. Avoid multiple freeze-thaw cycles.
<b>Immunogen</b>	Recombinant human laminin-alpha 3B N-term ~190 kDa fragment. Alpha 3A chain is truncated form ,and alpha 3B chain is full length.
<b>Purification</b>	Unpurified
<b>Conjugation</b>	Unconjugated
<b>Note</b>	For laboratory use only. Not for any clinical, therapeutic, or diagnostic use in humans or animals. Not for animal or human consumption.

## DATA IMAGES



### GTx17685 ELISA Image

ELISA analysis of five recombinant human laminins using GTx17684 Laminin alpha 3B antibody [F7] and GTx17685 Laminin alpha 3A antibody [BG5].



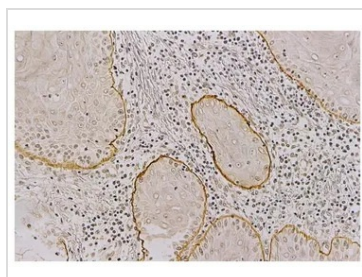
### GTx17685 WB Image

WB analysis of recombinant human intact laminin 3A32 protein (containing alpha 3A, Beta 3, gamma 2 chains) using GTx17685 Laminin alpha 3A antibody [BG5].

Dilution : 1:10000

Reduced condition : 7% gel

Non-reduced condition : 5% gel



### GTx17685 IHC-P Image

IHC-P analysis of skin cancer tissue using GTx17685 Laminin alpha 3A antibody [BG5].



For full product information, images and publications, please visit our [website](https://www.genetex.com).